



EAGLE
NATURAL RESOURCES

Grizzly Ridge Joint Venture

Multi-Project Horizontal Well Development Program

Powder River Basin, Campbell County, Wyoming
North Park Basin, Jackson County, Colorado
Uinta Basin, Duchesne County, Utah

14 New Horizontal Wells
Four Projects
Seven Leases
Four Operators
Three Different Target Formations

1.135714% (Avg) Non-Operated Working Interest,
0.851786% (Avg) Net Revenue Interest (in Each Well)

Available for \$3.4MM

Grizzly Ridge Joint Venture

Multi-Project Horizontal Well Development Program
Powder River Basin, North Park Basin, Uinta Basin



EAGLE
NATURAL RESOURCES

**Grizzly Ridge Joint Venture
14-Well Development Program**

**Powder River Basin (5 Wells)
North Park Basin (8 Wells)
Uinta Basin (1 Well)**



Grizzly Ridge Joint Venture

Multi-Project Horizontal Well Development Program
Powder River Basin, North Park Basin, Uinta Basin



EAGLE
NATURAL RESOURCES

Grizzly Ridge Joint Venture – Low-Risk Horizontal Development

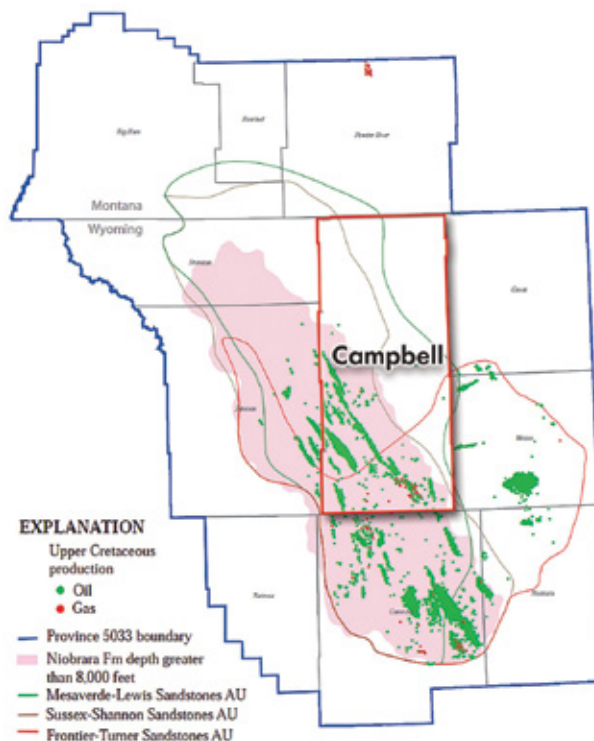
Powder River Basin – Five Wells – Campbell County, Wyoming
North Park Basin – Eight Wells – Jackson County, Colorado
Uinta Basin – One Well – Duchesne County, Utah

The Grizzly Ridge joint Venture involves the drilling and completion of 14 new horizontal wells with four different operators, Rockies Resources, Devon Energy, Fulcrum Energy and Javelin Operating, located in the 1) Powder River Basin in Campbell County, Wyoming, 2) North Park Basin in Jackson County, Colorado and 3) Uinta Basin in Duchesne County, Utah. Grizzly Ridge is comprised of four different projects with the current status of the 14 wells as follows: 1) one well completed, pending production, 2) two wells drilled, pending completion (DUC) and 3) 11 wells to drill in 2025.

Projects 1 and 2 – Powder River Basin – Five Wells – Campbell County, Wyoming

The Powder River Basin is emerging as a world class oil and gas basin, and currently has 11 drilling rigs active in the basin, which is more than the seven rigs currently drilling in the prolific DJ Basin in Colorado to the south. Like the DJ Basin, the Powder River Basin is an established oil shale resource play and considered a very low geologic-risk drilling opportunity in several different prospective formation targets. The “stacked” formation targets of the Powder River Basin allows a “shared risk” approach to oil and gas development. In the two different projects in Grizzly Ridge, there are two different formations that will be targeted: three Parkman wells and two Niobrara wells. Both of these horizontal formations (shown on the Stratigraphic Chart) already produce in the offset horizontal wells (used in the Analog Production Study), and both formations respond very well to horizontal drilling and multi-stage fracturing. The ongoing development of the unconventional resources of the Powder River Basin can be considered more of a “mining process” than a true exploration or “wildcatting” play, since the oil is already in-place, and horizontal drilling and multi-stage hydraulic fracturing can be used to extract the oil economically.

Powder River Basin – Oil and Gas Map





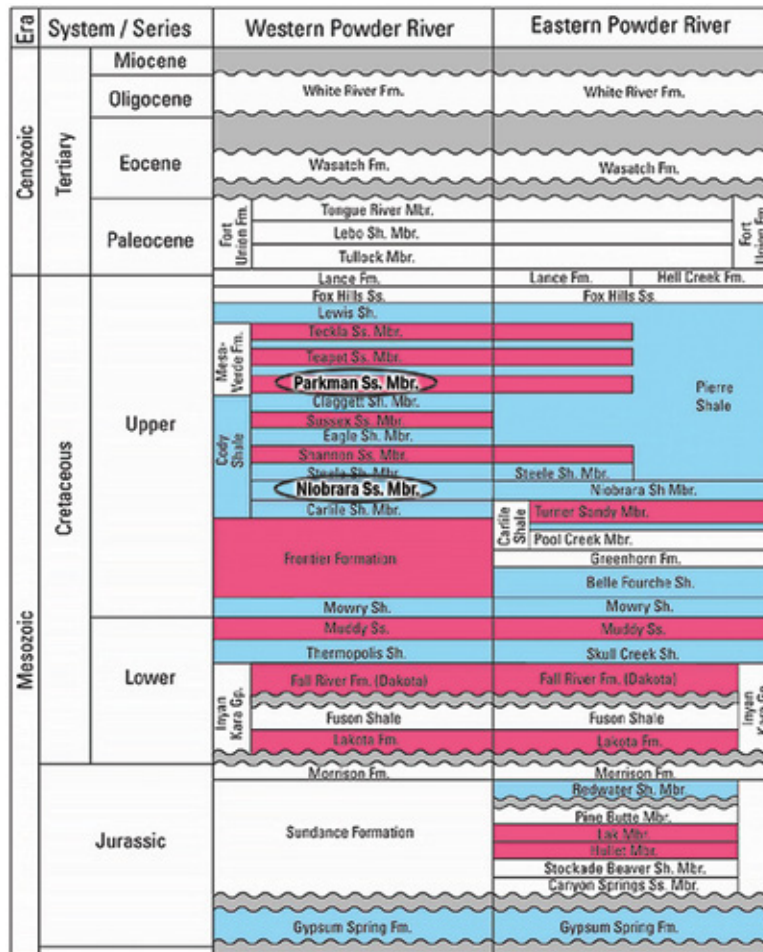
Grizzly Ridge Joint Venture – Low-Risk Horizontal Development

Powder River Basin – Five Wells – Campbell County, Wyoming

North Park Basin – Eight Wells – Jackson County, Colorado

Uinta Basin – One Well – Duchesne County, Utah

Powder River Basin – Stratigraphic Chart
Two Target Reservoirs – Parkman and Niobrara



Project 1 (Cumberland) consists of drilling three new horizontal Parkman wells with Rockies Resources as operator, to be drilled as 2-mile laterals in Campbell County, Wyoming. Rockies Resources has already produced 7.6 million barrels oil and 9.3 billion cubic feet gas (or 8.0 million barrels oil equivalent) from 45 horizontal wells in the Powder River Basin to date (which is an average of 178 thousand barrels oil equivalent per well). Rockies Resources produces three main reservoirs in the Powder River Basin: Parkman (15 wells), Teapot (15 wells) and Turner (15 wells) Formations. Cumulative production from their 15 Parkman fm wells totals 2.8 million barrels oil and 2.7 billion cubic feet gas (or 2.9 million barrels oil equivalent) with current daily average per well rate of 201 barrels oil equivalent per day. Eagle is to participate in three Parkman wells at a 2.350000% Working Interest with a 1.762500% Net Revenue Interest. All three wells are permitted, to be drilled in 2025.

Project 2 (Ark Land) consists of drilling two new horizontal Niobrara wells with Devon Energy as operator, to be drilled as 3-mile laterals in Campbell County, Wyoming. Devon Energy has already produced 90 million barrels oil and 118 billion cubic feet gas (or 96 million barrels oil equivalent) from 415 horizontal wells in the Powder



Grizzly Ridge Joint Venture – Low-Risk Horizontal Development

Powder River Basin – Five Wells – Campbell County, Wyoming
North Park Basin – Eight Wells – Jackson County, Colorado
Uinta Basin – One Well – Duchesne County, Utah

River Basin to date (which is an average of 231 thousand barrels oil equivalent per well). Devon Energy produces seven reservoirs in the Powder River Basin: Niobrara (64 wells), Parkman (162 wells), Turner (98 wells), Teapot (63 wells), Frontier (24 wells), Mowry (3 wells) and Shannon (1 well) Formations. Cumulative production from their 64 Niobrara wells totals 13.2 million barrels oil and 17.6 billion cubic feet gas (or 14.1 million barrels oil equivalent) with current daily average per well rate of 210 barrels oil equivalent per day. Eagle is to participate in two Niobrara wells at a 1.250000% Working Interest with a 0.937500% Net Revenue Interest. Both wells already drilled, pending completion (DUC status), to commence production in 2025.

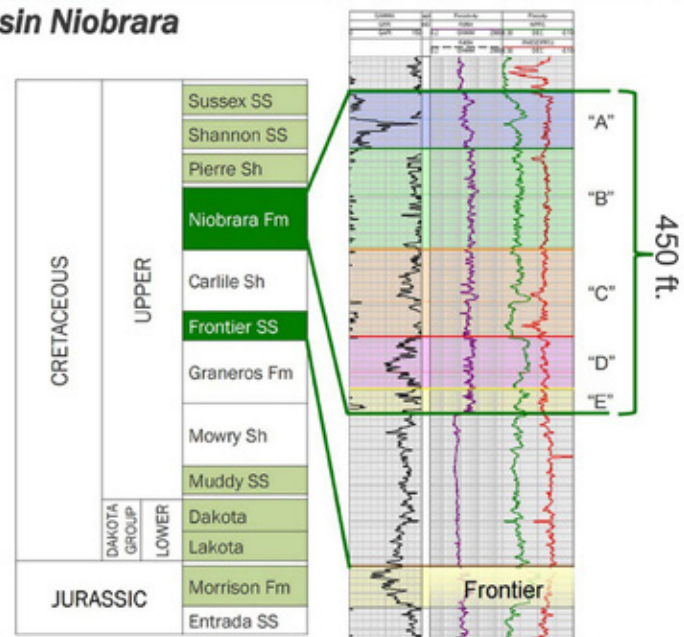
Project 3 – North Park Basin – Eight Wells – Jackson County, Colorado

Project 3 (Janet Ray) consists of drilling eight new horizontal Niobrara wells with Fulcrum Energy as operator, to be drilled in Jackson County, Colorado, in the emerging North Park Basin in north-central Colorado, due west of the DJ Basin. Fulcrum Energy has already produced 10 million barrels oil and 13 billion cubic feet gas (or 11 million barrels oil equivalent) from 67 horizontal Niobrara wells in the North Park Basin to date (which is an average of 158 thousand barrels oil equivalent per well). Fulcrum Energy produces the Niobrara Formation, which has similar rock properties as the Niobrara Formation in the adjacent DJ Basin to the east (see Niobrara comparison table below). Current daily average per well rate for Fulcrum’s 51 active Niobrara wells is 70 barrels oil equivalent per day. Eagle is to participate in eight Niobrara wells at a 0.625000% Working Interest with a 0.468750% Net Revenue Interest. All eight wells are permitted, to be drilled in 2025.

North Park Basin – Niobrara Comparison to DJ Basin

Similar Geologic Characteristics to the DJ Basin Niobrara

	NORTH PARK BASIN
Depth	5,500 – 9,000 ft.
Reservoir Storage Capacity	
Gross Thickness	450 – 480 ft.
Porosity	6 – 9%
OOIP per Section	> 55 MMBo
Thermal Maturity (Ro)	0.75 – 1.0%
Reservoir Production Potential	
Reservoir Pressure	> 0.55 psi per foot
Gas-oil Ratio (GOR)	600 – 700 scf/stb
Total Organic Content (TOC)	3%



Credit: ShaleExperts.com

Grizzly Ridge Joint Venture

Multi-Project Horizontal Well Development Program
Powder River Basin, North Park Basin, Uinta Basin



EAGLE
NATURAL RESOURCES

Grizzly Ridge Joint Venture – Low-Risk Horizontal Development

Powder River Basin – Five Wells – Campbell County, Wyoming

North Park Basin – Eight Wells – Jackson County, Colorado

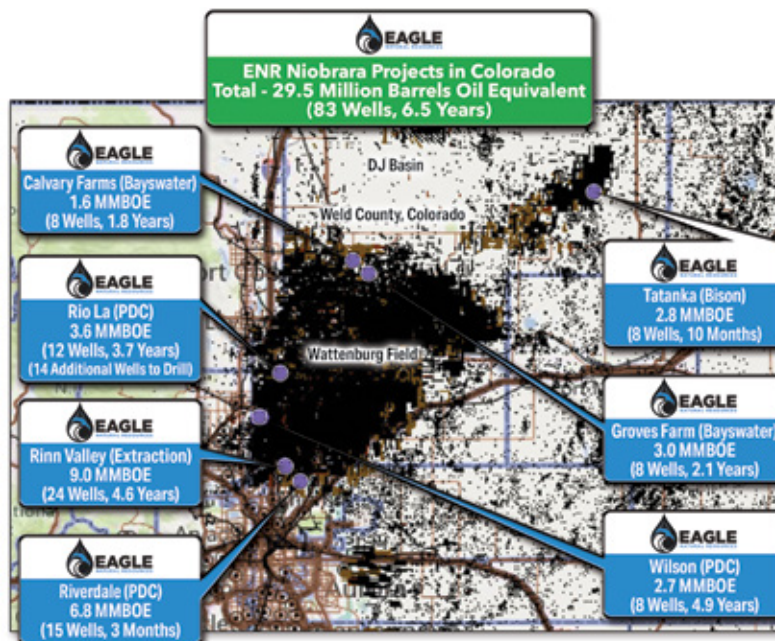
Uinta Basin – One Well – Duchesne County, Utah

Project 4 – Uinta Basin – One Well – Duchesne County, Utah

Project 4 (CD) consists of drilling one new horizontal Wasatch well with Javelin Operating as operator, to be drilled as a 2-mile lateral in Duchesne County, Utah. Javelin Operating has already produced 28 million barrels oil and 76 billion cubic feet gas (or 32 million barrels oil equivalent) from 128 horizontal wells in the Uinta Basin to date (which is an average of 249 thousand barrels oil equivalent per well). Javelin Energy produces seven reservoirs in the Powder River Basin: Wasatch (6 wells), Uteland Buttes (116 wells), Green River (3 wells), Castle Peak (2 wells) and Douglas Creek (1 well) Formations. Cumulative production from their six Wasatch wells totals 1.1 million barrels oil and 3.2 billion cubic feet gas (or 1.3 million barrels oil equivalent) with current daily average per well rate of 20 barrels oil equivalent per day. Eagle is to participate in one Wasatch well at a 1.350000% Working Interest with a 1.012500% Net Revenue Interest. The new well is already drilled and completed, to commence production in 2025.

In the DJ Basin, which is south of the Powder River Basin and east of the North Park Basin, Eagle Natural Resources has participated in a non-operating working interest position in 83 consecutive successful Niobrara and Codell horizontal wells in Colorado, including the Rio La, Wilson, Rinn Valley, Groves Farm, Calvary Farms, Riverdale and Tatanka Projects, with gross production of 29.5 Million Barrels Oil, Equivalent, since September 2018, from these seven projects.

DJ Basin – Properties Map



Eagle continues to pursue additional non-operating working interest projects in the Powder River Basin, North Park Basin, Uinta Basin and DJ Basin, taking advantage of recovering oil and natural gas prices, as well as the later generation completion techniques developed by industry over many years, receiving the benefit of billions of dollars invested in the "learning curve" of early development in the prolific formations of the oil and gas basins in Wyoming, Colorado and Utah.

Grizzly Ridge Joint Venture

Multi-Project Horizontal Well Development Program
Powder River Basin, North Park Basin, Uinta Basin



EAGLE
NATURAL RESOURCES

Grizzly Ridge Joint Venture

Multi-Project Oil and Gas Development Program

Powder River Basin (WY), North Park Basin (CO) and Uinta Basin (UT)

14 New Horizontal Wells - 10 Niobrara Wells, 3 Parkman Wells and 1 Wasatch Well

Four Projects - Seven Leases - Four Operators (Devon Energy, Rockies Resources, Fulcrum Energy and Javelin Energy)

1.135714% (Avg) Non-Operated Working Interest, 0.851786% (Avg) Net Revenue Interest (in Each Well)

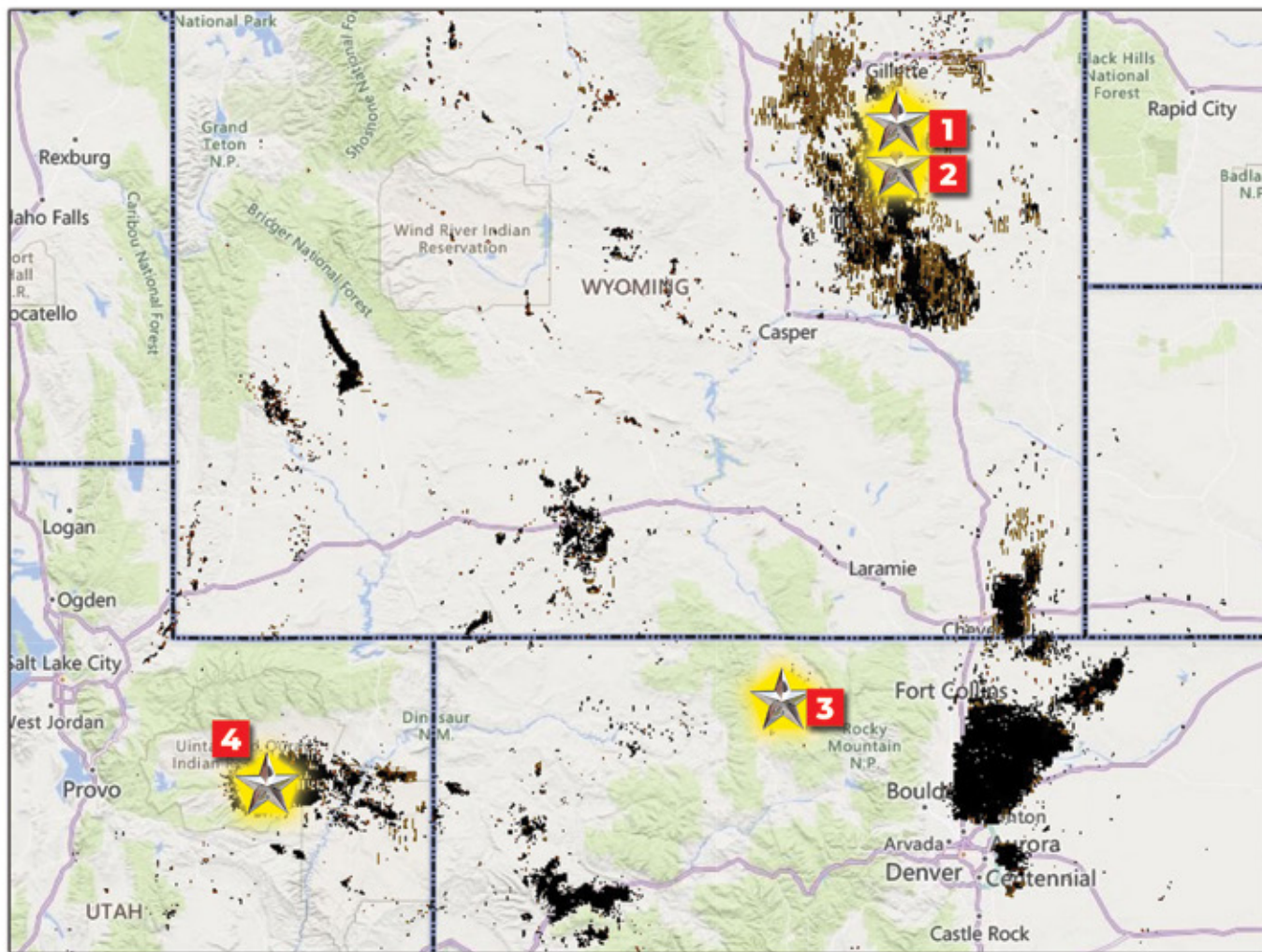
Available for \$3.4MM

Project 1 (Campbell County, WY): Operator Rockies Resources - Three Parkman Wells to Drill in 2025 Permitted, to Drill

Project 2 (Campbell County, WY): Operator Devon Energy - Two Niobrara Wells Drilled, to Complete (DUC)

Project 3 (Jackson County, CO): Operator Fulcrum Energy - Eight Niobrara Wells to Drill in 2025 Permitted, to Drill

Project 4 (Duchesne County, UT): Operator Javelin Operating - One Wasatch Well Completed, to Produce



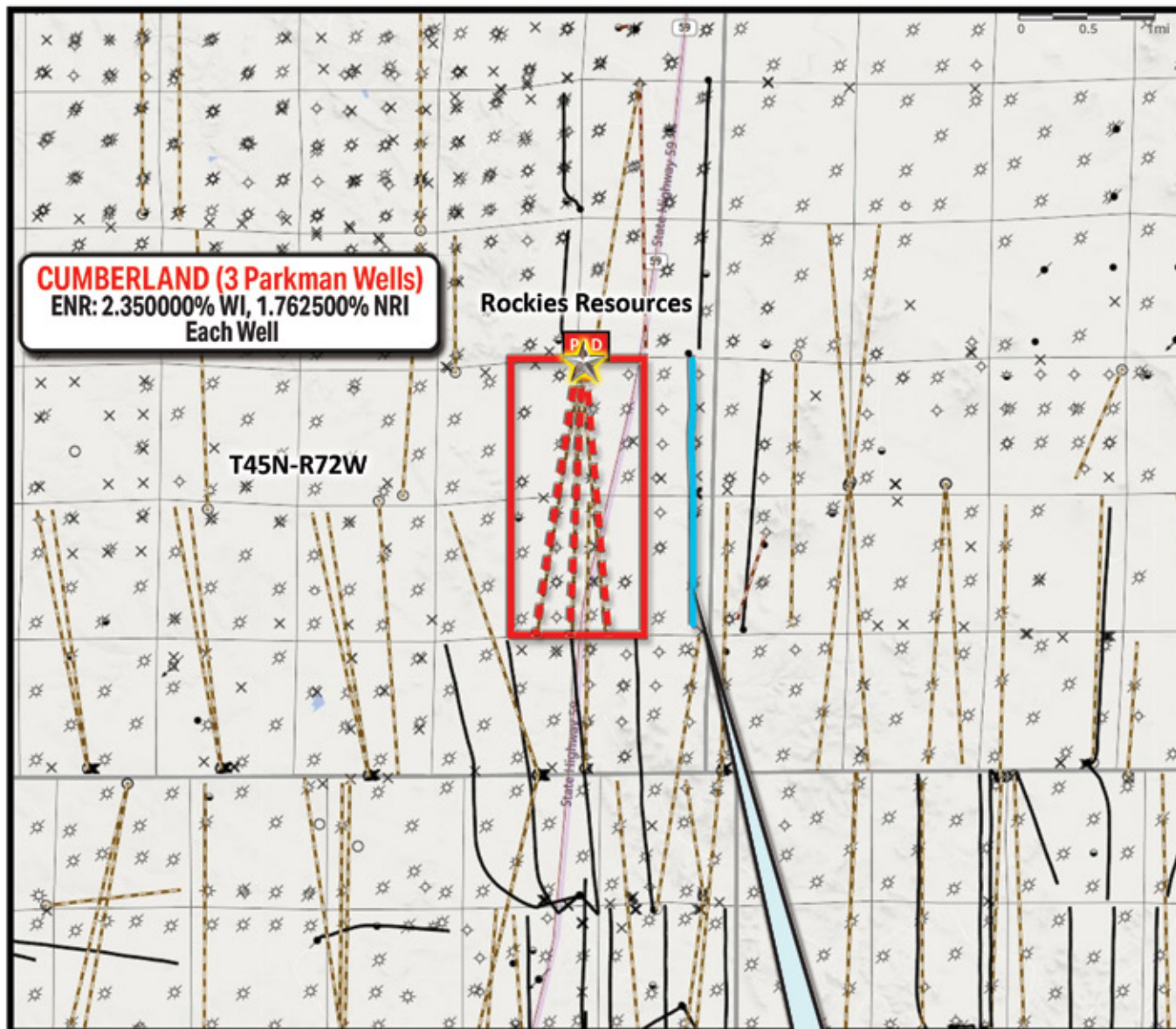
Grizzly Ridge Joint Venture

Multi-Project Horizontal Well Development Program
Powder River Basin, North Park Basin, Uinta Basin



EAGLE
NATURAL RESOURCES

PROJECT 1 (Cumberland): Three Parkman Wells - Operator Rockies Resources to Drill in 2025
Operational Status as of 7/7/25: Three Wells Permitted



Offset Parkman Analog Well (2-Mile Lateral) - Devon Energy
286,706 BO + 101,283 MCFG (291,770 BOE)
(API 4900562411 - Aug 2014 to May 2025, 10.7 Years)
EUR 405,279 BO + 162,383 MCFG (413,398 BOE)
(20 Years, Estimate)

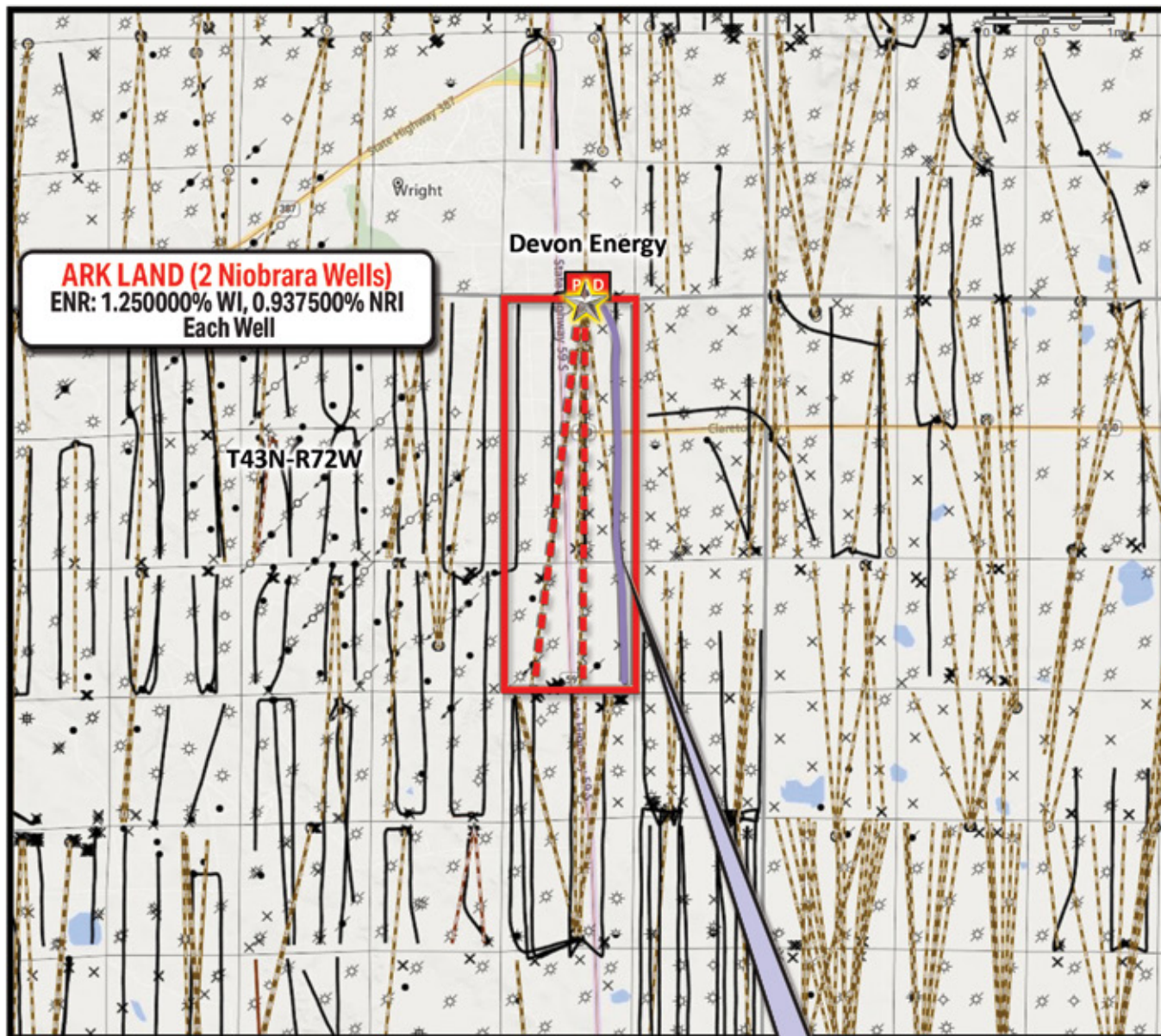
Grizzly Ridge Joint Venture

Multi-Project Horizontal Well Development Program
Powder River Basin, North Park Basin, Uinta Basin



EAGLE
NATURAL RESOURCES

PROJECT 2 (Ark Land): Two Niobrara Wells - Operator Devon Energy to Produce in 2025
Operational Status as of 7/7/25: Two Wells Drilled, to Complete



ARK LAND (2 Niobrara Wells)
ENR: 1.250000% WI, 0.937500% NRI
Each Well

Offset Niobrara Analog Well (3-Mile Lateral) - Devon Energy
369,658 BO + 411,500 MCFG (390,233 BOE)
(API 4900578158 - June 2023 to May 2025, 2.0 Years)
EUR 853,118 BO + 1,740,188 MCFG (940,127 BOE)
(20 Years, Estimate)

Grizzly Ridge Joint Venture

Multi-Project Horizontal Well Development Program
Powder River Basin, North Park Basin, Uinta Basin



EAGLE
NATURAL RESOURCES

PROJECT 3 (Janet Ray): Eight Niobrara Wells - Operator Fulcrum Energy to Drill in 2025
Operational Status as of 7/7/25: Eight Wells Permitted

Offset Niobrara Analog Well (2-Mile Lateral) - Sandridge

634,564 BO + 474,315 MCFG (658,280 BOE)

(API 0505706616 - Aug 2019 to April 2025, 5.6 Years)

EUR 836,824 BO + 1,372,190 MCFG (905,434 BOE)

(20 Years, Estimate)

EUR 976,294 BO + 1,600,893 MCFG (1,056,338 BOE)

(Adjusted to 2.5-Mile Lateral for 2 Wells, 20 Years, Estimate)

Fulcrum Energy

JANET (6 Niobrara Wells)

ENR: 0.625000% WI, 0.468750% NRI
Each Well

T7N-R80W

Highway 14

Highway 14

Coalmont

Fulcrum Energy

RAY (2 Niobrara Wells)

ENR: 0.625000% WI, 0.468750% NRI
Each Well

Offset Niobrara Analog Well (2-Mile Lateral) - Sandridge

242,299 BO + 425,261 MCFG (263,562 BOE)

(API 0505706606 - July 2018 to April 2025, 6.8 Years)

EUR 245,085 BO + 610,919 MCFG (275,631 BOE)

(Adjusted to 1-Mile Lateral, 20 Years, Estimate)

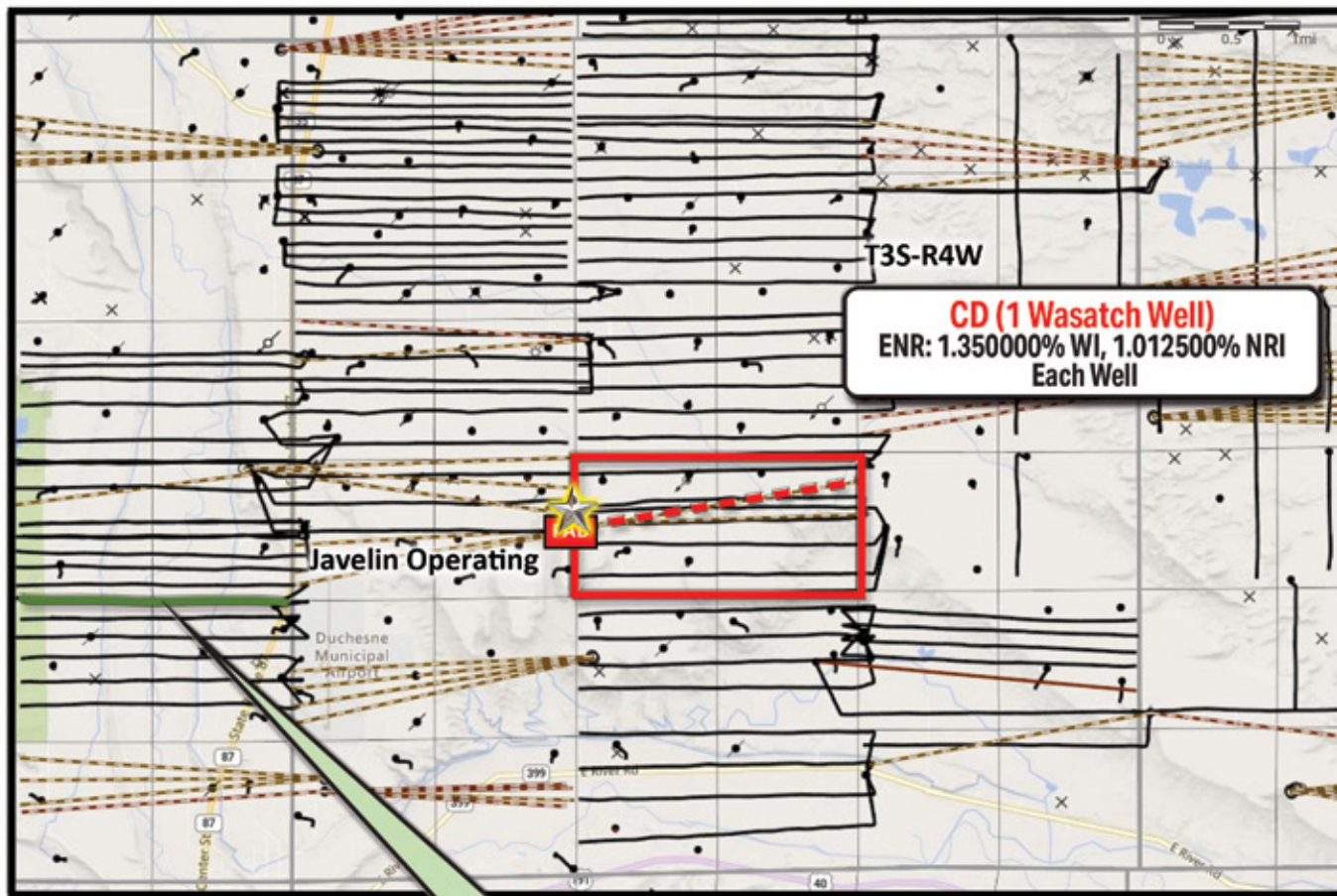
Grizzly Ridge Joint Venture

Multi-Project Horizontal Well Development Program
Powder River Basin, North Park Basin, Uinta Basin



EAGLE
NATURAL RESOURCES

PROJECT 4 (CD): One Wasatch Well - Operator Javelin Operating to Produce in 2025
Operational Status as of 7/7/25: One Well Completed, to Produce



CD (1 Wasatch Well)
ENR: 1.350000% WI, 1.012500% NRI
Each Well

Offset Wasatch Analog Well (2-Mile Lateral) - Javelin Energy
328,048 BO + 1,263,244 MCFG (391,210 BOE)
(API 4301353737 - Aug 2018 to May 2025, 6.7 Years)
EUR 487,805 BO + 2,131,955 MCFG (567,646 BOE)
(20 Years, Estimate)

Grizzly Ridge Joint Venture

Multi-Project Horizontal Well Development Program

Powder River Basin, North Park Basin, Uinta Basin



Grizzly Ridge Non-Op Working Interest Project

Three Different US Shale Basins: Powder River Basin (Wyoming), North Park Basin (Colorado) and Uinta Basin (Utah)

14 Total Wells in Three States:

A. WYOMING (5 Wells): Niobrara Formation (2 Wells) and Parkman Formation (3 Wells)

B. COLORADO (8 Wells): Niobrara Formation

C. UTAH (1 Well): Wasatch Formation

Status: 1 Well Completed, to Produce - 2 Wells Drilled, to Complete (DUC) - 11 Wells Permitted, to Drill

Four Operators: Rockies Resources, Devon Energy, Fulcrum Energy and Javelin Operating

Seven Leases: Cumberland, Quicksilver, Miami, Ark Land, Janet, Ray Ranch and CD

Three Formations: Niobrara (10 Wells), Parkman (3 Wells) and Wasatch (1 Well)

A. WYOMING

Project 1 - Cumberland - Powder River Basin, Campbell County

API	Operator	Well	Formation	Status	WI	NRI	Location	Lat Length
4900578313	Rockies Resources	Cumberland 1PH	Parkman	Permitted, to Drill	2.350000%	1.762500%	T45N-R72W Sec 24	2.0
4900578314	Rockies Resources	Quicksilver 1PH	Parkman	Permitted, to Drill	2.350000%	1.762500%	T45N-R72W Sec 24	2.0
4900579202	Rockies Resources	Miami 1PH	Parkman	Permitted, to Drill	2.350000%	1.762500%	T45N-R72W Sec 24	2.0

Avg WI/NRI Each Well: **2.350000%** **1.762500%**

Total WI/NRI: **7.050000%** **5.287500%**

Project 2 - Ark Land - Powder River Basin, Campbell County

API	Operator	Well	Formation	Status	WI	NRI	Location	Lat Length
4900579293	Devon Energy	Ark Land 1XNH	Niobrara	Drilled, to Complete	1.250000%	0.937500%	T43N-R72W Sec 2	3.0
4900579292	Devon Energy	Ark Land 3XNH	Niobrara	Drilled, to Complete	1.250000%	0.937500%	T43N-R72W Sec 2	3.0

Avg WI/NRI Each Well: **1.250000%** **0.937500%**

Total WI/NRI: **2.500000%** **1.875000%**

B. COLORADO

Project 3 - Janet Ray - North Park Basin, Jackson County

API	Operator	Well	Formation	Status	WI	NRI	Location	Lat Length
0505706639	Fulcrum Energy	Janet 7S	Niobrara	Permitted, To Drill	0.625000%	0.468750%	T7N-R80W Sec 5	2.0
0505706642	Fulcrum Energy	Janet 8S	Niobrara	Permitted, To Drill	0.625000%	0.468750%	T7N-R80W Sec 5	2.0
0505706637	Fulcrum Energy	Janet 9S	Niobrara	Permitted, To Drill	0.625000%	0.468750%	T7N-R80W Sec 5	2.0
0505706643	Fulcrum Energy	Janet 10S	Niobrara	Permitted, To Drill	0.625000%	0.468750%	T7N-R80W Sec 5	2.0
0505706646	Fulcrum Energy	Janet 11S	Niobrara	Permitted, To Drill	0.625000%	0.468750%	T7N-R80W Sec 5	2.5
0505706645	Fulcrum Energy	Janet 12S	Niobrara	Permitted, To Drill	0.625000%	0.468750%	T7N-R80W Sec 5	2.5
0505706555	Fulcrum Energy	Ray Ranch 3	Niobrara	Permitted, To Drill	0.625000%	0.468750%	T7N-R80W Sec 21	1.0
0505706530	Fulcrum Energy	Ray Ranch 4	Niobrara	Permitted, To Drill	0.625000%	0.468750%	T7N-R80W Sec 21	1.0

Avg WI/NRI Each Well: **0.625000%** **0.468750%**

Total WI/NRI: **5.000000%** **3.750000%**

C. UTAH

Project 4 - CD - Uintah Basin, Duchesne County

API	Operator	Well	Formation	Status	WI	NRI	Location	Lat Length
4301354832	Javelin Operating	CD 9H	Wasatch	Completed, To Produce	1.350000%	1.012500%	T3S-R4W Sec 21	2.0

Avg WI/NRI Each Well: **1.350000%** **1.012500%**

Total WI/NRI: **15.900000%** **11.925000%**

Avg WI/NRI Each Well (14 Wells): **1.135714%** **0.851786%**



Grizzly Ridge Joint Venture

Multi-Project Horizontal Well Development Program

Powder River Basin, North Park Basin, Uinta Basin



Grizzly Ridge Joint Venture

14 New Horizontal Wells - 10 Niobrara Wells, 3 Parkman Wells and 1 Wasatch Well
 Powder River Basin - Campbell County, Wyoming
 North Park Basin - Jackson County, Colorado
 Uinta Basin - Duchesne County, Utah

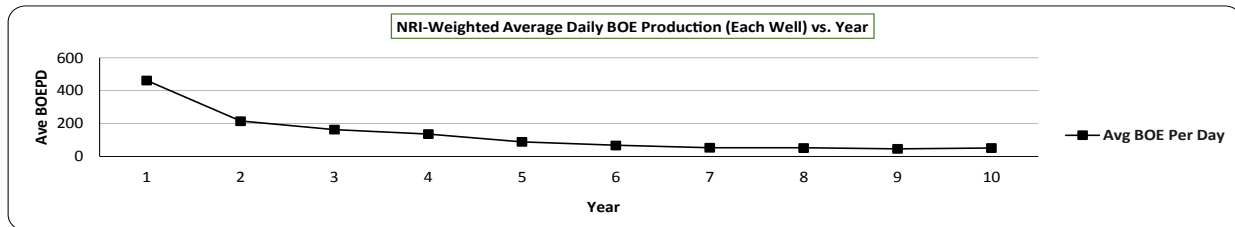
Monthly Income Conversion Table

Total Acquisition Cost:	\$3,400,000	Drilling:	\$1,700,000.00	Table Based on 1 Unit:	\$100,000
		Completion:	\$1,700,000.00	Individual Tax Rate:	40%
Grizzly Ridge (14 Wells):		Units:	34	Drill, Test and Complete - Tax Savings:	\$40,000
Gross Working Interest (Each Well, Avg):	1.135714%			<small>(100% Deduction, 40% Tax Rate)</small>	
Gross Net Revenue Interest (Each Well, Avg):	0.851786%	75% NRI (Gross)		Risk Capital (minus Tax Savings):	\$60,000
Unit Working Interest (Each Well, Avg):	0.033403%	<small>(\$100k/\$3400k)</small>			
Unit Net Revenue Interest (Each Well, Avg):	0.025053%	<small>(\$100k/\$3400k)</small>		Total Projections at Risk Capital (after Tax Benefit) for Drill, Test and Completion:	\$60,000

Project	Well Name	BOE EUR	% of Production
Project 1	Cumberland Parkman Analog (2-Mile Lateral)	413,398 BOE EUR	44.3%
	Cumberland Parkman Analog Initial Potential Rate	628 BOE/DPD	
	Cumberland Parkman Analog Year 1 Avg Rate	261 BOE/DPD	
Project 2	Ark Land Niobrara Analog (3-Mile Lateral)	940,127 BOE EUR	15.7%
	Ark Land Niobrara Analog Initial Potential Rate	809 BOE/DPD	
	Ark Land Niobrara Analog Year 1 Avg Rate	675 BOE/DPD	
Project 3	Janet Ray Niobrara Analog (2-Mile and 1-Mile Hybrid)	785,704 BOE EUR	31.4%
	Janet Ray Niobrara Analog Initial Potential Rate	936 BOE/DPD	
	Janet Ray Niobrara Analog Year 1 Avg Rate	577 BOE/DPD	
Project 4	CD Wasatch Analog (2-Mile Lateral)	567,646 BOE EUR	8.5%
	CD Wasatch Analog Initial Potential Rate	1,591 BOE/DPD	
	CD Wasatch Analog Year 1 Avg Rate	695 BOE/DPD	
NRI-Weighted Hybrid Analog (Each Well)		626,391 BOE EUR	100.0%
<small>14 Total Wells (Average)</small>			

6% NRI-Weighted Average Daily BOE Production by Year (Each Well)

Year	Avg BOE Per Day	14 Total Wells (Average)
1	462	Avg BOE Production for each Project Averaged by NRI (same as EURs)
2	215	
3	164	
4	137	
5	89	
6	68	
7	54	Same Colors are Highlighted on the Tables for
8	53	
9	46	
10	52	



14 WELLS - NET MONTHLY PRODUCTION INCOME POTENTIAL and ANNUAL RETURN

Oil / Price	\$65			\$80			\$95		
	Monthly Production	Annual Return % Cash On Cash	Annual Return % w/ Tax Deduction	Monthly Production	Annual Return % Cash On Cash	Annual Return % w/ Tax Deduction	Monthly Production	Annual Return % Cash On Cash	Annual Return % w/ Tax Deduction
1,600	\$9,621	115%	192%	\$11,841	142%	237%	\$14,062	169%	281%
950	\$5,713	69%	114%	\$7,031	84%	141%	\$8,349	100%	167%
800	\$4,811	58%	96%	\$5,921	71%	118%	\$7,031	84%	141%
700	\$4,209	51%	84%	\$5,181	62%	104%	\$6,152	74%	123%
600	\$3,608	43%	72%	\$4,441	53%	89%	\$5,273	63%	105%
462	\$2,778	33%	56%	\$3,419	41%	68%	\$4,060	49%	81%
350	\$2,105	25%	42%	\$2,590	31%	52%	\$3,076	37%	62%
200	\$1,203	14%	24%	\$1,480	18%	30%	\$1,758	21%	35%
150	\$902	11%	18%	\$1,110	13%	22%	\$1,318	16%	26%
100	\$601	7%	12%	\$740	9%	15%	\$879	11%	18%
50	\$301	4%	6%	\$370	4%	7%	\$439	5%	9%

Price Ratio BOE Conversion of 20 used as 20-year average ratio (Assumes \$3.25 Natural Gas at \$65 Oil, or price ratio of 20)

\$ and % are for combined interests at certain per well rate and price

14 WELLS - GROSS RETURN POTENTIAL

7.5% Op Costs + 5.7835% Avg Severance Taxes Deducted

Oil / Price	\$65			\$80			\$95		
	Total Production	Cash On Cash Return %	w/ Tax Deduction Return %	Total Production	Cash On Cash Return %	w/ Tax Deduction Return %	Total Production	Cash On Cash Return %	w/ Tax Deduction Return %
1,200,000	\$237,233	237%	395%	\$291,980	292%	487%	\$346,726	347%	578%
950,000	\$187,810	188%	313%	\$231,150	231%	385%	\$274,491	274%	457%
800,000	\$158,156	158%	264%	\$194,653	195%	324%	\$231,150	231%	385%
700,000	\$138,386	138%	231%	\$170,321	170%	284%	\$202,257	202%	337%
626,391	\$123,834	124%	206%	\$152,411	152%	254%	\$180,988	181%	302%
600,000	\$118,617	119%	198%	\$145,990	146%	243%	\$173,363	173%	289%
550,000	\$108,732	109%	181%	\$133,824	134%	223%	\$158,916	159%	265%
400,000	\$79,078	79%	132%	\$97,327	97%	162%	\$115,575	116%	193%
250,000	\$49,424	49%	82%	\$60,829	61%	101%	\$72,235	72%	120%

Price Ratio BOE Conversion of 20 used as 20-year average ratio (Assumes \$3.25 Natural Gas at \$65 Oil, or price ratio of 20)

7.5% Op Costs + 5.7835% Avg Severance Taxes Deducted

The values shown are hypothetical and are used to assist in the calculations relating to possible production levels.

See CIM "RISK FACTORS" and "PROPOSED ACTIVITIES". See attached conversion table and economic analysis assumptions.

CONFIDENTIAL and ESTIMATES ONLY



Detailed Production Report

Sun Jul 06, 2025

A039024 (Well)

County, State/Prov: CAMPBELL, WYOMING
Lease: DURHAM RANCHES 254572 Well Number: 24-4XPH
Operator: DEVON ENERGY PRODUCT (195455)
Status: ACTIVE
Prod ID: A039024
Production Thru Date: May 31, 2025

Project 1 (Cumberland) - Analog Production

Header Block

Data Source: PI
Lease Name: DURHAM RANCHES 254572
Operator: DEVON ENERGY PRODUCTION CO LP
State/Prov: WYOMING
County: CAMPBELL
Primary API/UWI: 49005624110000
Regulatory/CDN License:
First Production Date: Aug 01, 2014
Field: WC
Reservoir/Pool Name: PARKMAN
Prod Zone: PARKMAN
Basin: POWDER RIVER BASIN (725500)
Play Name: PRB SHALLOW OIL

Gas Gatherer: UNKWN
Liquid Gatherer: UNKWN
Location: 13 45N 72W SE
Latitude/Longitude: +43.86933 -105.44904
Cum Data Source: PI
Cum Oil: 286,706 BBL
Cum Gas: 101,283 MCF
Cum Water: 162,317 BBL

Country Name: UNITED STATES
Completion Date: Aug 13, 2014
Total Depth: 16,624 FT
Upper Perforation: 6,640 FT
Lower Perforation: 16,475 FT
Oil Gravity: 39 API
Gas Gravity:
Last Production Date: May 31, 2025
Temp Gradient: 2.0 FFT
N Factor:
Prod Zone Code: 604PRKM
GOR: 224 CFB
Play Type: CONVENTIONAL TIGHT (CONV TIGHT)
Primary Product: CRUDE OIL
Status: ACTIVE
Data Source: PI
Lat/Long Source: IH

Cum Inj Liq:
Cum Inj Gas:
Cum Inj Water:

Annual Production

Data Source:	PI			
(11 years)		Oil BBLs	Gas MCF	Water BBLs
Beginning Cum:				
2014		60,635	9,584	41,444
2015		43,363	5,215	23,383
2016		31,835	5,909	15,636
2017		32,110	17,567	17,667
2018		27,686	20,199	17,580
2019		20,179	10,041	11,763
2020		11,061	4,202	6,466
2021		12,071	3,488	6,482
2022		12,185	5,140	5,832
2023		11,502	6,035	4,965
2024		18,011	9,608	7,989
2025		6,068	4,295	3,110
TOTALS		286,706	101,283	162,317

Monthly Production

Grizzly Ridge Joint Venture

Multi-Project Horizontal Well Development Program
Powder River Basin, North Park Basin, Uinta Basin



EAGLE
NATURAL RESOURCES

S&P

Sun Jul 06, 2025

Detailed Production Report

Data Source: PI
(Most recent 130 of 130 months)

Year	Month	Oil BBLs	Gas MCF	Water BBLs	GOR SCF/BBLs	% Water	State Well Count	Days On
2014	AUG	15,201	2,273	14,273	150	48.43	1	31
2014	SEP	18,694	2,688	11,862	144	38.82	1	30
2014	OCT	8,325	954	5,177	115	38.34	1	26
2014	NOV	7,715	863	4,759	112	38.15	1	30
2014	DEC	10,700	2,806	5,373	262	33.43	1	31
Totals 2014		60,635	9,584	41,444				
2015	JAN	5,614	1,538	3,005	274	34.86	1	23
2015	FEB	4,458	197	2,538	44	36.28	1	25
2015	MAR	4,280	318	2,124	74	33.17	1	31
2015	APR	3,911	421	1,891	108	32.59	1	30
2015	MAY	3,690	266	1,769	72	32.41	1	31
2015	JUN	3,771	424	1,763	112	31.86	1	30
2015	JUL	3,906	460	1,738	118	30.79	1	31
2015	AUG	3,433	365	1,593	106	31.70	1	31
2015	SEP	3,318	431	1,458	130	30.53	1	30
2015	OCT	2,965	345	1,352	116	31.32	1	31
2015	NOV	2,910	353	1,282	121	30.58	1	30
2015	DEC	1,107	97	2,870	88	72.16	1	27
Totals 2015		43,363	5,215	23,383				
2016	JAN	2,646	115	2,859	43	51.93	1	31
2016	FEB	1,534	51	701	33	31.36	1	26
2016	MAR	485	2	509	4	51.21	1	28
2016	APR	3,106	235	1,541	76	33.16	1	30
2016	MAY	3,537	428	1,386	121	28.15	1	31
2016	JUN	3,454	675	1,320	195	27.65	1	30
2016	JUL	3,413	698	1,379	205	28.78	1	31
2016	AUG	3,242	809	1,301	250	28.64	1	31
2016	SEP	2,864	826	1,226	288	29.98	1	30
2016	OCT	2,331	533	1,013	229	30.29	1	31
2016	NOV	2,417	667	1,146	276	32.16	1	30
2016	DEC	2,806	870	1,255	310	30.90	1	31
Totals 2016		31,835	5,909	15,636				
2017	JAN	2,194	711	954	324	30.30	1	30
2017	FEB	2,147	620	926	289	30.13	1	28
2017	MAR	2,284	752	1,065	329	31.80	1	31
2017	APR	1,830	531	901	290	32.99	1	30
2017	MAY	2,066	606	789	293	27.64	1	31
2017	JUN	1,957	601	1,196	307	37.93	1	30
2017	JUL	1,783	768	948	431	34.71	1	31
2017	AUG	2,053	670	1,194	326	36.77	1	28
2017	SEP	4,196	2,646	2,286	631	35.27	1	30
2017	OCT	4,162	3,253	2,729	782	39.60	1	31
2017	NOV	3,728	2,927	1,993	785	34.84	1	29
2017	DEC	3,710	3,482	2,686	939	41.99	1	31
Totals 2017		32,110	17,567	17,667				

Grizzly Ridge Joint Venture

Multi-Project Horizontal Well Development Program
Powder River Basin, North Park Basin, Uinta Basin



EAGLE
NATURAL RESOURCES

S&P

Sun Jul 06, 2025

Detailed Production Report

Year	Month	Oil BBLs	Gas MCF	Water BBLs	GOR SCF/BBLs	% Water	State Well Count	Days On
2018	JAN	3,538	3,366	2,430	951	40.72	1	31
2018	FEB	2,915	2,729	1,928	936	39.81	1	28
2018	MAR	2,913	2,530	1,945	869	40.04	1	31
2018	APR	2,399	1,838	1,741	766	42.05	1	30
2018	MAY	2,029	1,517	847	748	29.45	1	31
2018	JUN	2,452	1,601	1,680	653	40.66	1	30
2018	JUL	2,259	1,461	1,283	647	36.22	1	31
2018	AUG	2,076	1,320	1,274	636	38.03	1	31
2018	SEP	1,895	1,108	1,216	585	39.09	1	30
2018	OCT	1,799	991	1,133	551	38.64	1	31
2018	NOV	1,721	889	1,062	517	38.16	1	30
2018	DEC	1,690	849	1,041	502	38.12	1	31
Totals 2018		27,686	20,199	17,580				
2019	JAN	1,585	837	967	528	37.89	1	31
2019	FEB	1,323	601	854	454	39.23	1	28
2019	MAR	2,139	889	1,436	416	40.17	1	31
2019	APR	2,439	1,143	1,091	469	30.91	1	30
2019	MAY	1,923	1,028	1,052	535	35.36	1	31
2019	JUN	1,659	861	902	519	35.22	1	30
2019	JUL	1,652	895	1,062	542	39.13	1	31
2019	AUG	1,391	653	761	469	35.36	1	29
2019	SEP	1,602	782	1,101	488	40.73	1	30
2019	OCT	1,621	771	965	476	37.32	1	31
2019	NOV	1,498	830	839	554	35.90	1	30
2019	DEC	1,347	751	733	558	35.24	1	31
Totals 2019		20,179	10,041	11,763				
2020	JAN	1,133	697	698	615	38.12	1	31
2020	FEB	980	440	640	449	39.51	1	29
2020	MAR	1,298	556	769	428	37.20	1	31
2020	APR	1,100	518	575	471	34.33	1	30
2020	MAY	930	283	511	304	35.46	1	31
2020	JUN	838	275	472	328	36.03	1	30
2020	JUL	881	297	538	337	37.91	1	31
2020	AUG	893	290	488	325	35.34	1	31
2020	SEP	793	244	485	308	37.95	1	30
2020	OCT	792	323	467	408	37.09	1	31
2020	NOV	739	164	448	222	37.74	1	30
2020	DEC	684	115	375	168	35.41	1	31
Totals 2020		11,061	4,202	6,466				
2021	JAN	643	76	291	118	31.16	1	31
2021	FEB	539	97	451	180	45.56	1	28
2021	MAR	503	65	187	129	27.10	1	31
2021	APR	433	60	253	139	36.88	1	30
2021	MAY	871	326	743	374	46.03	1	31
2021	JUN	1,329	487	783	366	37.07	1	30
2021	JUL	1,361	432	679	317	33.28	1	31
2021	AUG	1,338	389	651	291	32.73	1	31
2021	SEP	1,279	384	587	300	31.46	1	30

Grizzly Ridge Joint Venture

Multi-Project Horizontal Well Development Program
Powder River Basin, North Park Basin, Uinta Basin



EAGLE
NATURAL RESOURCES

S&P

Sun Jul 06, 2025

Detailed Production Report

Year	Month	Oil BBLs	Gas MCF	Water BBLs	GOR SCF/BBLs	% Water	State Well Count	Days On
2021	OCT	1,292	345	633	267	32.88	1	31
2021	NOV	1,261	409	630	324	33.32	1	30
2021	DEC	1,222	418	594	342	32.71	1	31
Totals 2021		12,071	3,488	6,482				
2022	JAN	1,191	347	642	291	35.02	1	31
2022	FEB	1,141	314	577	275	33.59	1	28
2022	MAR	1,224	314	660	257	35.03	1	31
2022	APR	997	270	451	271	31.15	1	30
2022	MAY	670	389	317	581	32.12	1	31
2022	JUN	853	461	460	540	35.03	1	30
2022	JUL	1,039	558	540	537	34.20	1	31
2022	AUG	1,076	460	503	428	31.86	1	31
2022	SEP	934	422	253	452	21.31	1	30
2022	OCT	997	520	523	522	34.41	1	31
2022	NOV	1,035	565	461	546	30.82	1	30
2022	DEC	1,028	520	445	506	30.21	1	31
Totals 2022		12,185	5,140	5,832				
2023	JAN	1,000	540	483	540	32.57	1	31
2023	FEB	873	443	390	507	30.88	1	28
2023	MAR	918	487	424	531	31.59	1	31
2023	APR	941	490	282	521	23.06	1	30
2023	MAY	857	473	195	552	18.54	1	31
2023	JUN	643	381	184	593	22.25	1	30
2023	JUL	612	346	256	565	29.49	1	31
2023	AUG	544	326	177	599	24.55	1	31
2023	SEP	514	314	200	611	28.01	1	30
2023	OCT	464	300	184	647	28.40	1	31
2023	NOV	1,459	894	1,042	613	41.66	1	30
2023	DEC	2,677	1,041	1,148	389	30.01	1	31
Totals 2023		11,502	6,035	4,965				
2024	JAN	2,210	974	575	441	20.65	1	31
2024	FEB	2,000	887	719	444	26.44	1	29
2024	MAR	1,788	937	889	524	33.21	1	31
2024	APR	925	547	406	591	30.50	1	30
2024	MAY	1,415	819	855	579	37.67	1	31
2024	JUN	1,763	893	800	507	31.21	1	30
2024	JUL	1,600	862	666	539	29.39	1	31
2024	AUG	588	314	520	534	46.93	1	31
2024	SEP	1,743	966	901	554	34.08	1	30
2024	OCT	1,498	832	590	555	28.26	1	31
2024	NOV	1,702	893	586	525	25.61	1	30
2024	DEC	779	684	482	878	38.22	1	31
Totals 2024		18,011	9,608	7,989				
2025	JAN	1,118	954	711	853	38.87	1	31
2025	FEB	1,424	903	638	634	30.94	1	28
2025	MAR	1,254	839	580	669	31.62	1	31
2025	APR	975	735	560	754	36.48	1	30

Grizzly Ridge Joint Venture

Multi-Project Horizontal Well Development Program
Powder River Basin, North Park Basin, Uinta Basin



EAGLE
NATURAL RESOURCES

S&P

Sun Jul 06, 2025

Detailed Production Report

Year	Month	Oil BBLs	Gas MCF	Water BBLs	GOR SCF/BBLs	% Water	State Well Count	Days On
2025	MAY	1,297	864	621	666	32.38	1	31
Totals 2025		6,068	4,295	3,110				

Oil Tests

API Number	Well Nbr	Data Source	Test Type	Comp Date	Upper Perf.	Lower Perf.	Total Depth	Test Date	WHFP	Choke 64ths	GOR CFBBL	BS + Wtr%	Water B/D	Oil BD	CsHd Gas Mcf/d
49005624110000	24- 4XPH	PI	IP	2014-08-13	6640	16475	16624	2014-08-13			224			420	94



Detailed Production Report

Sun Jul 06, 2025

A087835 (Well)

County, State/Prov: CAMPBELL, WYOMING
Lease: ARK LAND FED Well Number: 02-144372-5XNH
Operator: DEVON ENERGY PRODUCT (195455)
Status: ACTIVE
Prod ID: A087835
Production Thru Date: May 31, 2025

Project 2 (Ark Land) - Analog Production

Header Block

Data Source:	PI	Country Name:	UNITED STATES
Lease Name:	ARK LAND FED	Completion Date:	Jun 07, 2023
Operator:	DEVON ENERGY PRODUCTION CO LP	Total Depth:	24,949 FT
State/Prov:	WYOMING	Upper Perforation:	9,482 FT
County:	CAMPBELL	Lower Perforation:	24,949 FT
Primary API/UWI:	49005781580100	Oil Gravity:	42 API
Regulatory/CDN License:		Gas Gravity:	
First Production Date:	Jun 01, 2023	Last Production Date:	May 31, 2025
Field:	WC	Temp Gradient:	2.0 FFT
Reservoir/Pool Name:	NIOBRARA	N Factor:	
Prod Zone:	NIOBRARA	Prod Zone Code:	603NBRR
Basin:	POWDER RIVER BASIN (725500)	GOR:	684 CFB
Play Name:	NIOBRARA FRACTURE PLAY	Play Type:	SHALE (SHALE)
Gas Gatherer:	UNKWN	Primary Product:	CRUDE OIL
Liquid Gatherer:	UNKWN	Status:	ACTIVE
Location:	2 43N 72W NE	Data Source:	PI
Latitude/Longitude	+43.73608 -105.47017	Lat/Long Source:	IH
Cum Data Source:	PI	Cum Inj Liq:	
Cum Oil:	369,658 BBL	Cum Inj Gas:	
Cum Gas:	411,500 MCF	Cum Inj Water:	
Cum Water:	136,785 BBL		

Annual Production

Data Source:	PI		
(2 years)		Oil BBLs	Gas MCF
Beginning Cum:			Water BBLs
2023		158,310	146,557
2024		163,126	198,666
2025		48,222	66,277
TOTALS		369,658	411,500
			136,785

Monthly Production

Data Source: PI
(Most recent 24 of 24 months)

Year	Month	Oil BBLs	Gas MCF	Water BBLs	GOR SCF/BBLs	% Water	State Well Count	Days On
2023	JUN	14,987	10,356	9,110	691	37.81	1	24
2023	JUL	26,948	23,000	10,158	853	27.38	1	31
2023	AUG	28,034	26,704	9,506	953	25.32	1	31
2023	SEP	27,345	25,034	9,474	915	25.73	1	30
2023	OCT	18,715	17,613	12,202	941	39.47	1	26
2023	NOV	22,137	22,557	11,741	1019	34.66	1	30

Grizzly Ridge Joint Venture

Multi-Project Horizontal Well Development Program
Powder River Basin, North Park Basin, Uinta Basin



EAGLE
NATURAL RESOURCES

S&P

Sun Jul 06, 2025

Detailed Production Report

Year	Month	Oil BBLS	Gas MCF	Water BBLS	GOR SCF/BBLS	% Water	State Well Count	Days On
2023	DEC	20,144	21,293	8,718	1057	30.21	1	31
Totals 2023		158,310	146,557	70,909				
2024	JAN	17,847	20,123	6,975	1128	28.10	1	31
2024	FEB	15,979	17,655	5,607	1105	25.98	1	29
2024	MAR	15,151	16,646	4,439	1099	22.66	1	31
2024	APR	14,423	17,329	4,180	1201	22.47	1	30
2024	MAY	13,043	13,684	2,420	1049	15.65	1	23
2024	JUN	14,014	17,893	4,225	1277	23.16	1	29
2024	JUL	13,528	17,788	4,590	1315	25.33	1	31
2024	AUG	12,837	17,329	4,120	1350	24.30	1	31
2024	SEP	11,928	14,781	3,540	1239	22.89	1	30
2024	OCT	11,959	16,119	3,697	1348	23.61	1	31
2024	NOV	11,253	14,552	3,398	1293	23.19	1	30
2024	DEC	11,164	14,767	3,573	1323	24.25	1	31
Totals 2024		163,126	198,666	50,764				
2025	JAN	10,720	13,720	3,267	1280	23.36	1	31
2025	FEB	9,262	12,797	2,764	1382	22.98	1	28
2025	MAR	9,892	14,328	3,207	1448	24.48	1	31
2025	APR	9,206	13,147	2,949	1428	24.26	1	30
2025	MAY	9,142	12,285	2,925	1344	24.24	1	31
Totals 2025		48,222	66,277	15,112				

Oil Tests

API Number	Well Nbr	Data Source	Test Type	Comp Date	Upper Perf.	Lower Perf.	Total Depth	Test Date	WHFP	Choke 64ths	GOR CFBBL	BS + Wtr%	Water B/D	Oil B/D	CsHd Gas Mcf/d
49005781580100	02- 14437 2- 5XNH	PI	IP	2023-06-07	9482	24949	24949	2023-07-01	1075	20.0	684		293	782	535



Detailed Production Report

Sun Jul 06, 2025

A071036 (Well)

County, State/Prov: JACKSON, COLORADO
Lease: PATRIOT Well Number: 15-32H5-0880
Operator: FULCRUM ENRGY OPER (381332)
Status: ACTIVE
Prod ID: A071036
Production Thru Date: Apr 30, 2025

Project 3 (Janet Ray) - Analog Production (Janet)

Header Block

Data Source:	PI	Country Name:	UNITED STATES
Lease Name:	PATRIOT	Completion Date:	May 31, 2019
Operator:	FULCRUM ENERGY OPERATING LLC	Total Depth:	18,525 FT
State/Prov:	COLORADO	Upper Perforation:	8,238 FT
County:	JACKSON	Lower Perforation:	18,338 FT
Primary API/UWI:	05057066160000	Oil Gravity:	37 API
Regulatory/CDN License:		Gas Gravity:	
First Production Date:	Aug 01, 2019	Last Production Date:	Apr 30, 2025
Field:	NORTH PARK HORIZONTAL NIOBRARA	Temp Gradient:	2.0 FFT
Reservoir/Pool Name:	NIOBRARA	N Factor:	
Prod Zone:	NIOBRARA	Prod Zone Code:	603NBRR
Basin:	NORTH PARK BASIN (738700)	GOR:	509 CFB
Play Name:	NIOBRARA FRACTURE PLAY	Play Type:	SHALE (SHALE)
Gas Gatherer:	UNKWN	Primary Product:	CRUDE OIL
Liquid Gatherer:	UNKWN	Status:	ACTIVE
Location:	29 8N 80W SE	Data Source:	PI
Latitude/Longitude	+40.62992 -106.39452	Lat/Long Source:	IH
Cum Data Source:	PI	Cum Inj Liq:	
Cum Oil:	634,564 BBL	Cum Inj Gas:	
Cum Gas:	474,315 MCF	Cum Inj Water:	
Cum Water:	120,512 BBL		

Annual Production

Data Source:	PI		
(6 years)		Oil BBLS	Gas MCF
Beginning Cum:			Water BBLS
2019		90,097	17,925
2020		188,816	2,139
2021		128,683	87,368
2022		93,979	121,385
2023		56,056	122,222
2024		42,867	95,980
2025		34,066	27,296
TOTALS		634,564	474,315
			120,512

Monthly Production

Data Source:	PI							
(Most recent 69 of 69 months)								
Year	Month	Oil BBLS	Gas MCF	Water BBLS	GOR SCF/BBLS	% Water	State Well Count	Days On
2019	AUG	336			0		1	31
2019	SEP	19,671	8	8,026	0	28.98	1	30

Grizzly Ridge Joint Venture

Multi-Project Horizontal Well Development Program
Powder River Basin, North Park Basin, Uinta Basin



EAGLE
NATURAL RESOURCES

S&P

Sun Jul 06, 2025

Detailed Production Report

Year	Month	Oil BBLs	Gas MCF	Water BBLs	GOR SCF/BBLs	% Water	State Well Count	Days On
2019	OCT	23,997	5,041	14,545	210	37.74	1	31
2019	NOV	22,832	12,673	9,281	555	28.90	1	30
2019	DEC	23,261	203	8,475	9	26.70	1	31
Totals 2019		90,097	17,925	40,327				
2020	JAN	23,834	294	5,974	12	20.04	1	31
2020	FEB	20,238	188	3,915	9	16.21	1	29
2020	MAR	18,050	140	4,007	8	18.17	1	31
2020	APR	18,018	210	1,954	12	9.78	1	30
2020	MAY	17,744	189	1,595	11	8.25	1	31
2020	JUN	12,673	130	1,085	10	7.89	1	28
2020	JUL	14,583	174	1,672	12	10.29	1	31
2020	AUG	12,919	88	1,608	7	11.07	1	31
2020	SEP	12,112	96	1,431	8	10.57	1	30
2020	OCT	13,009	168	2,370	13	15.41	1	30
2020	NOV	12,534	244	1,639	19	11.56	1	30
2020	DEC	13,102	218	1,583	17	10.78	1	31
Totals 2020		188,816	2,139	28,833				
2021	JAN	12,846	207	1,430	16	10.02	1	31
2021	FEB	11,167	166	1,432	15	11.37	1	28
2021	MAR	1,984	7,761	1,415	3912	41.63	1	30
2021	APR	11,751	8,510	1,339	724	10.23	1	30
2021	MAY	12,100	9,810	1,331	811	9.91	1	31
2021	JUN	11,553	8,703	1,331	753	10.33	1	30
2021	JUL	12,437	8,445	1,331	679	9.67	1	31
2021	AUG	11,745	8,841	1,231	753	9.49	1	31
2021	SEP	11,241	8,602	1,168	765	9.41	1	30
2021	OCT	11,151	8,858	1,150	794	9.35	1	31
2021	NOV	10,564	8,736	1,258	827	10.64	1	30
2021	DEC	10,144	8,729	1,598	861	13.61	1	31
Totals 2021		128,683	87,368	16,014				
2022	JAN	9,423	8,513	1,202	903	11.31	1	28
2022	FEB	8,828	8,031	1,231	910	12.24	1	28
2022	MAR	7,891	7,120	1,150	902	12.72	1	28
2022	APR	8,368	9,185	1,231	1098	12.82	1	30
2022	MAY	8,548	9,810	1,451	1148	14.51	1	30
2022	JUN	7,340	8,703	1,159	1186	13.64	1	30
2022	JUL	7,244	8,445	850	1166	10.50	1	30
2022	AUG	6,915	8,913	833	1289	10.75	1	29
2022	SEP	8,277	13,788	1,350	1666	14.02	1	30
2022	OCT	7,529	12,139	1,224	1612	13.98	1	31
2022	NOV	6,850	12,809	1,157	1870	14.45	1	30
2022	DEC	6,766	13,929	1,235	2059	15.44	1	30
Totals 2022		93,979	121,385	14,073				
2023	JAN	6,386	11,997	1,151	1879	15.27	1	31
2023	FEB	5,405	9,810	1,180	1815	17.92	1	28
2023	MAR	5,292	10,063	1,516	1902	22.27	1	31
2023	APR	5,613	11,546	1,186	2057	17.44	1	30

Grizzly Ridge Joint Venture

Multi-Project Horizontal Well Development Program
Powder River Basin, North Park Basin, Uinta Basin



EAGLE
NATURAL RESOURCES

S&P

Sun Jul 06, 2025

Detailed Production Report

Year	Month	Oil BBLS	Gas MCF	Water BBLs	GOR SCF/BBLS	% Water	State Well Count	Days On
2023	MAY	4,885	11,575	1,267	2369	20.59	1	31
2023	JUN	4,400	11,121	1,201	2528	21.44	1	30
2023	JUL	4,360	10,115	1,383	2320	24.08	1	30
2023	AUG	3,968	8,080	890	2036	18.32	1	30
2023	SEP	3,907	7,946	582	2034	12.97	1	30
2023	OCT	3,644	9,156	811	2513	18.20	1	30
2023	NOV	4,209	10,694	1,214	2541	22.39	1	30
2023	DEC	3,987	10,119	1,056	2538	20.94	1	31
Totals 2023		56,056	122,222	13,437				
2024	JAN	2,613	6,942	742	2657	22.12	1	30
2024	FEB	3,495	8,653	865	2476	19.84	1	29
2024	MAR	3,437	9,518	775	2769	18.40	1	31
2024	APR	3,262	9,441	668	2894	17.00	1	30
2024	MAY	3,183	8,585	530	2697	14.27	1	31
2024	JUN	2,860	9,264	845	3239	22.81	1	30
2024	JUL	2,718	8,141	369	2995	11.95	1	29
2024	AUG	2,922	7,997	521	2737	15.13	1	31
2024	SEP	2,663	7,652	444	2873	14.29	1	30
2024	OCT	2,614	8,044	422	3077	13.90	1	31
2024	NOV	2,747	6,168	497	2245	15.32	1	30
2024	DEC	10,353	5,575	81	538	.78	1	31
Totals 2024		42,867	95,980	6,759				
2025	JAN	10,963	5,727		522		1	31
2025	FEB	8,544	7,090	238	830	2.71	1	28
2025	MAR	7,933	7,678	547	968	6.45	1	31
2025	APR	6,626	6,801	284	1026	4.11	1	30
Totals 2025		34,066	27,296	1,069				

Oil Tests

API Number	Well Nbr	Data Source	Test Type	Comp Date	Upper Perf.	Lower Perf.	Total Depth	Test Date	WHFP	Choke 64ths	GOR CF/BBLS	BS + Wtr%	Water B/D	Oil B/D	CsHd Gas Mcfd
05057066160000	15-32H5-0880	PI	IP	2019-05-31	8238	18338	18525	2019-10-19	1765	21.0	509		400	886	451



Detailed Production Report

Sun Jul 06, 2025

A063333 (Well)

County, State/Prov: JACKSON, COLORADO
Lease: JANET Well Number: 3-16H21-0780
Operator: FULCRUM ENRGY OPER (381332)
Status: ACTIVE
Prod ID: A063333
Production Thru Date: Apr 30, 2025

Project 3 (Janet Ray) - Analog Production (Ray)

Header Block

Data Source:	PI	Country Name:	UNITED STATES
Lease Name:	JANET	Completion Date:	Mar 04, 2018
Operator:	FULCRUM ENERGY OPERATING LLC	Total Depth:	17,965 FT
State/Prov:	COLORADO	Upper Perforation:	8,115 FT
County:	JACKSON	Lower Perforation:	17,784 FT
Primary API/UWI:	05057066060000	Oil Gravity:	38 API
Regulatory/CDN License:		Gas Gravity:	
First Production Date:	Jul 01, 2018	Last Production Date:	Apr 30, 2025
Field:	NORTH PARK HORIZONTAL NIOBRARA	Temp Gradient:	2.0 FFT
Reservoir/Pool Name:	NIOBRARA	N Factor:	
Prod Zone:	NIOBRARA	Prod Zone Code:	603NBRR
Basin:	NORTH PARK BASIN (738700)	GOR:	840 CFB
Play Name:	NIOBRARA FRACTURE PLAY	Play Type:	SHALE (SHALE)
Gas Gatherer:	UNKWN	Primary Product:	CRUDE OIL
Liquid Gatherer:	UNKWN	Status:	ACTIVE
Location:	16 7N 80W NW	Data Source:	PI
Latitude/Longitude	+40.58426 -106.38676	Lat/Long Source:	IH
Cum Data Source:	PI	Cum Inj Liq:	
Cum Oil:	242,299 BBL	Cum Inj Gas:	
Cum Gas:	425,261 MCF	Cum Inj Water:	
Cum Water:	215,887 BBL		

Annual Production

Data Source:	PI		
(7 years)		Oil BBLS	Gas MCF
Beginning Cum:			Water BBLS
2018		95,782	67,688
2019		83,612	158,593
2020		23,360	60,696
2021		11,452	45,968
2022		12,810	52,744
2024		12,467	28,341
2025		2,816	11,231
TOTALS		242,299	425,261
			215,887

Monthly Production

Data Source:	PI							
(Most recent 67 of 67 months)								
Year	Month	Oil BBLS	Gas MCF	Water BBLS	GOR SCF/BBLS	% Water	State Well Count	Days On
2018	JUL	240			0		1	31
2018	AUG	8,497		13,591	0	61.53	1	31

Grizzly Ridge Joint Venture

Multi-Project Horizontal Well Development Program
Powder River Basin, North Park Basin, Uinta Basin



EAGLE
NATURAL RESOURCES

S&P

Sun Jul 06, 2025

Detailed Production Report

Year	Month	Oil BBLs	Gas MCF	Water BBLs	GOR SCF/BBLs	% Water	State Well Count	Days On
2018	SEP	23,573	4,470	45,569	190	65.91	1	26
2018	OCT	19,796	17,770	17,786	898	47.33	1	26
2018	NOV	21,610	22,145	13,639	1025	38.69	1	30
2018	DEC	22,066	23,303	10,833	1056	32.93	1	31
Totals 2018		95,782	67,688	101,418				
2019	JAN	16,814	21,379	8,424	1271	33.38	1	30
2019	FEB	13,613	22,497	7,966	1653	36.92	1	28
2019	MAR	8,632	14,924	6,397	1729	42.56	1	22
2019	APR	9,366	18,176	9,335	1941	49.92	1	30
2019	MAY	7,992	18,668	4,739	2336	37.22	1	31
2019	JUN	4,908	10,417	2,486	2122	33.62	1	28
2019	JUL	3,819	8,134	1,909	2130	33.33	1	18
2019	AUG	5,507	10,809	3,452	1963	38.53	1	31
2019	SEP	3,480	9,376	2,717	2694	43.84	1	29
2019	OCT	3,751	10,099	1,604	2692	29.95	1	31
2019	NOV	3,425	8,412	2,371	2456	40.91	1	30
2019	DEC	2,305	5,702	1,500	2474	39.42	1	21
Totals 2019		83,612	158,593	52,900				
2020	JAN	3,294	8,236	2,354	2500	41.68	1	29
2020	FEB	2,012	5,398	1,407	2683	41.15	1	27
2020	MAR	2,542	6,842	2,120	2692	45.47	1	30
2020	APR	2,169	6,030	1,697	2780	43.90	1	30
2020	MAY	2,089	5,854	1,735	2802	45.37	1	31
2020	JUN	1,361	3,433	983	2522	41.94	1	21
2020	JUL	1,772	3,677	1,008	2075	36.26	1	21
2020	AUG	1,978	4,967	1,628	2511	45.15	1	31
2020	SEP	1,603	3,921	1,188	2446	42.57	1	30
2020	OCT	1,634	4,603	1,364	2817	45.50	1	31
2020	NOV	1,476	4,047	1,195	2742	44.74	1	30
2020	DEC	1,430	3,688	1,031	2579	41.89	1	31
Totals 2020		23,360	60,696	17,710				
2021	JAN	1,371	3,647	1,071	2660	43.86	1	31
2021	FEB	1,128	3,055	1,268	2708	52.92	1	28
2021	MAR	195	3,439	1,178	17636	85.80	1	30
2021	APR	371	7,387	1,102	19911	74.81	1	30
2021	MAY	371	6,449	1,136	17383	75.38	1	31
2021	JUN		3,925	1,136			1	30
2021	JUL	1,450	735	1,136	507	43.93	1	31
2021	AUG	1,429	2,800	832	1959	36.80	1	31
2021	SEP	1,114	2,415	341	2168	23.44	1	30
2021	OCT	1,199	3,012	998	2512	45.43	1	31
2021	NOV	1,406	4,086	1,457	2906	50.89	1	30
2021	DEC	1,418	5,018	1,781	3539	55.67	1	31
Totals 2021		11,452	45,968	13,436				
2022	JAN	1,291	4,689	1,272	3632	49.63	1	18
2022	FEB	1,221	4,140	1,413	3391	53.64	1	17
2022	MAR	1,979	9,145	2,502	4621	55.84	1	17

Grizzly Ridge Joint Venture

Multi-Project Horizontal Well Development Program
Powder River Basin, North Park Basin, Uinta Basin



EAGLE
NATURAL RESOURCES

S&P

Sun Jul 06, 2025

Detailed Production Report

Year	Month	Oil BBLs	Gas MCF	Water BBLs	GOR SCF/BBLs	% Water	State Well Count	Days On
2022	APR	1,440	7,885	1,755	5476	54.93	1	26
2022	MAY	1,350	6,449	1,850	4777	57.81	1	26
2022	JUN	1,415	4,300	1,663	3039	54.03	1	26
2022	JUL	277	735	303	2653	52.24	1	6
2022	AUG	614	2,551	521	4155	45.90	1	11
2022	SEP	1,704	6,850	2,243	4020	56.83	1	29
2022	OCT	35	222	47	6343	57.32	1	7
2022	NOV	650	3,012	464	4634	41.65	1	10
2022	DEC	834	2,766	920	3317	52.45	1	14
Totals 2022		12,810	52,744	14,953				
2024	APR	852	1,154	108	1354	11.25	1	16
2024	MAY	2,685	4,635	1,926	1726	41.77	1	31
2024	JUN	2,062	3,979	2,056	1930	49.93	1	30
2024	JUL	1,875	4,068	2,307	2170	55.16	1	31
2024	AUG	1,439	4,066	1,727	2826	54.55	1	31
2024	SEP	1,083	2,963	1,219	2736	52.95	1	30
2024	OCT	912	2,372	1,072	2601	54.03	1	31
2024	NOV	828	2,449	1,011	2958	54.98	1	30
2024	DEC	731	2,655	906	3632	55.35	1	30
Totals 2024		12,467	28,341	12,332				
2025	JAN	754	2,705	898	3588	54.36	1	31
2025	FEB	695	2,923	782	4206	52.95	1	28
2025	MAR	711	2,894	756	4070	51.53	1	31
2025	APR	656	2,709	702	4130	51.69	1	30
Totals 2025		2,816	11,231	3,138				

Oil Tests

API Number	Well Nbr	Data Source	Test Type	Comp Date	Upper Perf.	Lower Perf.	Total Depth	Test Date	WHFP	Choke 64ths	GOR CFBBL	BS + Wtr%	Water B/D	Oil BD	CsHd Gas Mcf/d
05057066060000	3- 16H2 1- 0780	PI	IP	2018-03-04	8115	17784	17965	2018-09-09	129	35.0	840		1461	976	820



Detailed Production Report

Thu Jul 17, 2025

A064571 (Well)

County, State/Prov: DUCHESNE, UTAH
Lease: DUCHESNE CITY Well Number: 1-25-26-C5-2H
Operator: JAVELIN ENERGY PART (349241)
Status: ACTIVE
Prod ID: A064571
Production Thru Date: May 31, 2025

Project 4 (CD) - Analog Production

Header Block

Data Source:	PI	Country Name:	UNITED STATES
Lease Name:	DUCHESNE CITY (100213)	Completion Date:	Aug 19, 2018
Operator:	JAVELIN ENERGY PARTNERS MGMT LLC	Total Depth:	19,207 FT
State/Prov:	UTAH	Upper Perforation:	9,265 FT
County:	DUCHESNE	Lower Perforation:	19,084 FT
Primary API/UWI:	43013537370000	Oil Gravity:	
Regulatory/CDN License:		Gas Gravity:	
First Production Date:	Aug 01, 2018	Last Production Date:	May 31, 2025
Field:	ALTAMONT	Temp Gradient:	1.95 FFT
Reservoir/Pool Name:	WASATCH	N Factor:	
Prod Zone:	WASATCH	Prod Zone Code:	652WSTC
Basin:	UINTA BASIN (736500)	GOR:	
Play Name:	UINTA OIL	Play Type:	CONVENTIONAL TIGHT (CONV TIGHT)
Gas Gatherer:		Primary Product:	CRUDE OIL
Liquid Gatherer:		Status:	ACTIVE
Location:	25 3S 5W NE NE	Data Source:	PI
Latitude/Longitude	+40.19566 -110.38959	Lat/Long Source:	IH
Cum Data Source:	PI	Cum Inj Liq:	
Cum Oil:	328,048 BBL	Cum Inj Gas:	
Cum Gas:	1,263,244 MCF	Cum Inj Water:	
Cum Water:	285,433 BBL		

Annual Production

Data Source:	PI			
(7 years)		Oil BBLs	Gas MCF	Water BBLs
Beginning Cum:				
2018		165,948	116,429	108,946
2019		84,563	490,863	50,742
2020		33,458	279,004	19,487
2021		20,773	155,462	21,477
2022		9,771	52,511	47,390
2023		5,002	51,586	15,109
2024		6,089	77,439	15,669
2025		2,444	39,950	6,613
TOTALS		328,048	1,263,244	285,433

Monthly Production

Data Source: PI
(Most recent 82 of 82 months)

Grizzly Ridge Joint Venture

Multi-Project Horizontal Well Development Program
Powder River Basin, North Park Basin, Uinta Basin



EAGLE
NATURAL RESOURCES

S&P

Thu Jul 17, 2025

Detailed Production Report

Year	Month	Oil BBLs	Gas MCF	Water BBLs	GOR SCF/BBLs	% Water	State Well Count	Days On
2018	AUG	11,027		14,639	0	57.04	1	31
2018	SEP	43,504	47,570	28,595	1093	39.66	1	30
2018	OCT	46,962	45,117	29,050	961	38.22	1	31
2018	NOV	39,885	22,865	22,188	573	35.75	1	30
2018	DEC	24,570	877	14,474	36	37.07	1	31
Totals 2018		165,948	116,429	108,946				
2019	JAN	14,943	13,927	7,834	932	34.39	1	31
2019	FEB	11,263	82,602	6,560	7334	36.81	1	28
2019	MAR	10,149	83,035	6,352	8182	38.49	1	31
2019	APR	8,730	39,547	5,002	4530	36.43	1	30
2019	MAY	7,415	48,056	4,142	6481	35.84	1	31
2019	JUN	6,257	41,700	3,480	6665	35.74	1	30
2019	JUL	5,811	37,990	3,126	6538	34.98	1	31
2019	AUG	5,195	34,743	3,005	6688	36.65	1	31
2019	SEP	4,382	35,381	2,596	8074	37.20	1	30
2019	OCT	3,718	26,991	2,010	7260	35.09	1	31
2019	NOV	2,938	22,657	2,126	7712	41.98	1	30
2019	DEC	3,762	24,234	4,509	6442	54.52	1	31
Totals 2019		84,563	490,863	50,742				
2020	JAN	3,794	25,481	2,443	6716	39.17	1	31
2020	FEB	3,539	24,962	2,117	7053	37.43	1	29
2020	MAR	2,147	21,892	1,683	10197	43.94	1	31
2020	APR	2,761	24,811	966	8986	25.92	1	30
2020	MAY	2,682	24,586	1,052	9167	28.17	1	31
2020	JUN	2,934	23,447	1,619	7991	35.56	1	30
2020	JUL	3,147	23,685	1,553	7526	33.04	1	31
2020	AUG	2,315	22,339	1,554	9650	40.17	1	31
2020	SEP	2,488	21,850	1,506	8782	37.71	1	30
2020	OCT	2,674	22,618	1,691	8458	38.74	1	31
2020	NOV	2,501	21,254	1,597	8498	38.97	1	30
2020	DEC	2,476	22,079	1,706	8917	40.79	1	31
Totals 2020		33,458	279,004	19,487				
2021	JAN	2,474	22,224	1,778	8983	41.82	1	31
2021	FEB	159	3,198	685	20113	81.16	1	28
2021	MAR	2,045	19,758	3,055	9662	59.90	1	31
2021	APR	2,495	20,648	2,859	8276	53.40	1	30
2021	MAY	2,216	21,535	2,223	9718	50.08	1	31
2021	JUN	2,016	21,206	1,351	10519	40.12	1	30
2021	JUL	1,930	21,603	853	11193	30.65	1	31
2021	AUG	1,119	13,262	482	11852	30.11	1	31
2021	SEP		1,844				1	30
2021	OCT	2,285	4,067	2,147	1780	48.44	1	31
2021	NOV	2,151	2,890	1,703	1344	44.19	1	30
2021	DEC	1,883	3,227	4,341	1714	69.75	1	31
Totals 2021		20,773	155,462	21,477				
2022	JAN	1,759	3,782	7,068	2150	80.07	1	31
2022	FEB	1,263	4,132	6,014	3272	82.64	1	28

Grizzly Ridge Joint Venture

Multi-Project Horizontal Well Development Program
Powder River Basin, North Park Basin, Uinta Basin



EAGLE
NATURAL RESOURCES

S&P

Thu Jul 17, 2025

Detailed Production Report

Year	Month	Oil BBLs	Gas MCF	Water BBLs	GOR SCF/BBLs	% Water	State Well Count	Days On
2022	MAR	1,411	6,018	6,849	4265	82.92	1	31
2022	APR	1,088	7,096	5,556	6522	83.62	1	30
2022	MAY	1,037	6,258	5,009	6035	82.85	1	31
2022	JUN	750	5,701	3,149	7601	80.76	1	30
2022	JUL	648	5,056	2,769	7802	81.04	1	31
2022	AUG	528	3,160	2,207	5985	80.69	1	31
2022	SEP	297	1,382	1,026	4653	77.55	1	30
2022	OCT	351	3,196	2,612	9105	88.15	1	31
2022	NOV	468	3,970	3,308	8483	87.61	1	30
2022	DEC	171	2,760	1,823	16140	91.42	1	31
Totals 2022		9,771	52,511	47,390				
2023	JAN	185	3,100	1,820	16757	90.77	1	31
2023	FEB	174	1,756	356	10092	67.17	1	28
2023	MAR	723	4,897	2,185	6773	75.14	1	31
2023	APR	274	2,777	804	10135	74.58	1	30
2023	MAY	653	6,112	1,987	9360	75.27	1	31
2023	JUN	633	5,656	1,892	8935	74.93	1	30
2023	JUL	749	7,490	814	10000	52.08	1	31
2023	AUG	700	8,640	91	12343	11.50	1	31
2023	SEP	585	6,539	2,586	11178	81.55	1	30
2023	OCT	325	3,534	2,118	10874	86.70	1	31
2023	NOV		336	456			1	30
2023	DEC	1	749		749000		1	31
Totals 2023		5,002	51,586	15,109				
2024	JAN	120	2,468		20567		1	31
2024	FEB	879	7,935	1,196	9027	57.64	1	29
2024	MAR	849	6,279	2,578	7396	75.23	1	31
2024	APR	695	6,486	2,203	9332	76.02	1	30
2024	MAY	631	8,515	1,913	13494	75.20	1	31
2024	JUN	429	8,169	1,180	19042	73.34	1	29
2024	JUL	527	10,340	1,396	19620	72.59	1	30
2024	AUG		2,845				1	1
2024	SEP		4,116	13			1	4
2024	OCT	584	9,907	1,187	16964	67.02	1	31
2024	NOV	671	7,169	1,871	10684	73.60	1	30
2024	DEC	704	3,210	2,132	4560	75.18	1	31
Totals 2024		6,089	77,439	15,669				
2025	JAN	554	8,755	1,529	15803	73.40	1	31
2025	FEB	458	7,333	1,110	16011	70.79	1	28
2025	MAR	525	8,426	1,388	16050	72.56	1	31
2025	APR	480	7,886	1,310	16429	73.18	1	30
2025	MAY	427	7,550	1,276	17681	74.93	1	31
Totals 2025		2,444	39,950	6,613				

Oil Tests



Scout Ticket

49005783130000

Project 1 - Cumberland

Campbell County, WY

3 Parkman Wells - Scout Tickets

General Information

4572-2326-1PH CUMBERLAND

Data Source: PI
API/UWI: 49005783130000
State/Prov: WYOMING
Field: HOUSE CREEK
Current Status:
Reg. Well Status/Date:
Initial Class: DEVELOPMENT WELL (D)
Final Status: WELL PERMIT
Permit: on Nov 28, 2022
First Report Date: Dec 09, 2022
Projected TD: 17,438 FT
Basin: POWDER RIVER BASIN

Country: UNITED STATES
IC:
County: CAMPBELL
Operator: ROCKIES RESOURCES HOLDINGS LLC
Current Operator: ROCKIES RESOURCES HOLDINGS LLC

Final Well Class: ()
Target Objective: OIL
Hole Direction: HORIZONTAL
Abandonment Date:
Projected Formation: PARKMAN
Formation at TD:
PRODFit Form at TD:
Play Type: CONVENTIONAL TIGHT (CONV TIGHT)

Play Name: PRB SHALLOW OIL

Location

Section, Twp., Range:	24 45N 72W	Data Source:	PI
Spot Code:	NW		
Footage NS EW Origin:	429 FNL 117 FWL CONGRESS SECTION		
Principal Meridian:	6TH PRINCIPAL MRDN		
Lat/Long:	+43.8677320 -105.4649770	Lat/Long Source:	IH
PBH L/L:	+43.8394872 -105.4714005	Lat/Long Source:	IH
PBHL Footage NS EW Origin:	100 FSL 1420 FEL CONGRESS SECTION	Datum:	NAD27
PBHL Section:	26 45N 72W	Datum:	NAD27
ABHL Footage NS EW Origin:	100 FSL 1420 FEL	Data Source:	PI
ABHL Section:	26 45N 72W	Spot:	SW SE
		Data Source:	PI
		Spot:	SWSE

Location Narrative

Data Source	Type	Remark
PI	SCALED_FOOT	REGULATORY
PI	IRREG_SECT	Y
PI	LOCATION	MULTIPLE PERMITS FILES FILED AT THIS LOCATION SEE ALSO4900579202
PI	CONG_LOT	CONGRESS LOT
PI	LOCATION	SPOTTED WITH STATE PROPOSED LAT/LONG

Dates and Depths

Data Source: PI	
Spud:	Spud Date Code:
TD:	TD Date:
TVD:	PlugBack Depth:
Formation Code TD:	Formation Name TD:
PRODFit Form Code TD:	PRODFit Form Name TD:
Ref. Elevation: 4,769 FT GR	KB. Elevation:
Ground Elevation: 4,769 FT GR	LTD:
Contractor:	Final Drilling:
Completed:	Rig #:
Rig Release Date:	
Tool:	



Scout Ticket

49005792020000

General Information

4572-2326-1PH MIAMI

Data Source:	PI	Country:	UNITED STATES
API/UWI:	49005792020000	IC:	
State/Prov:	WYOMING	County:	CAMPBELL
Field:	HOUSE CREEK	Operator:	ROCKIES RESOURCES HOLDINGS LLC
Current Status:		Current Operator:	ROCKIES RESOURCES HOLDINGS LLC
Reg. Well Status/Date:		Final Well Class:	()
Initial Class:	DEVELOPMENT WELL (D)	Target Objective:	OIL
Final Status:	WELL PERMIT	Hole Direction:	HORIZONTAL
Permit:	on Nov 21, 2024	Abandonment Date:	
First Report Date:	Nov 26, 2024	Projected Formation:	PARKMAN
Projected TD:	17,249 FT	Formation at TD:	
Basin:	POWDER RIVER BASIN	PRODFit Form at TD:	
Play Name:		Play Type:	

Location

Section, Twp., Range:	24 45N 72W	Data Source:	PI
Spot Code:	NW		
Footage NS EW Origin:	429 FNL 117 FWL CONGRESS SECTION		
Principal Meridian:	6TH PRINCIPAL MRDN		
Lat/Long:	+43.8677465 -105.4650104	Lat/Long Source:	IH
PBH L/L:	+43.8397172 -105.4663008	Lat/Long Source:	IH
PBHL Footage NS EW Origin:	100 FSL 75 FEL CONGRESS SECTION	Datum:	NAD27
PBHL Section:	26 45N 72W	Datum:	NAD27
		Data Source:	PI
		Spot:	SE

Location Narrative

Data Source	Type	Remark
PI	SCALED_FOOT	REGULATORY
PI	IRREG_SECT	Y
PI	LOCATION	SPOTTED WITH STATE PROPOSED LAT/LONG
PI	CONG_LOT	CONGRESS LOT

Dates and Depths

Data Source:	PI	Spud Date Code:	
Spud:		TD Date:	
TD:		PlugBack Depth:	
TVD:		Formation Name TD:	
Formation Code TD:		PRODFit Form Name TD:	
PRODFit Form Code TD:		KB. Elevation:	
Ref. Elevation:	4,773 FT GR	LTD:	
Ground Elevation:	4,773 FT GR	Final Drilling:	
Contractor:		Rig #:	
Completed:			
Rig Release Date:			
Tool:			

Dwights Energydata Narrative

Accumulated through 1997

Grizzly Ridge Joint Venture

Multi-Project Horizontal Well Development Program
Powder River Basin, North Park Basin, Uinta Basin



EAGLE
NATURAL RESOURCES

S&P

Scout Ticket

Wed Jul 02, 2025

49005783140000

General Information

4572-2425-1PH QUICKSILVER

Data Source:	PI	Country:	UNITED STATES
API/UWI:	49005783140000	IC:	
State/Prov:	WYOMING	County:	CAMPBELL
Field:	HOUSE CREEK	Operator:	ROCKIES RESOURCES HOLDINGS LLC
Current Status:		Current Operator:	ROCKIES RESOURCES HOLDINGS LLC
Reg. Well Status/Date:		Final Well Class:	()
Initial Class:	DEVELOPMENT WELL (D)	Target Objective:	OIL
Final Status:	WELL PERMIT	Hole Direction:	HORIZONTAL
Permit:	on Nov 28, 2022	Abandonment Date:	
First Report Date:	Dec 09, 2022	Projected Formation:	PARKMAN
Projected TD:	17,395 FT	Formation at TD:	
Basin:	POWDER RIVER BASIN	PRODFit Form at TD:	
Play Name:	PRB SHALLOW OIL	Play Type:	CONVENTIONAL TIGHT (CONV TIGHT)

Location

Section, Twp., Range:	24 45N 72W	Data Source:	PI
Spot Code:	NW		
Footage NS EW Origin:	435 FNL 151 FWL CONGRESS SECTION		
Principal Meridian:	6TH PRINCIPAL MRDN		
Lat/Long:	+43.8677265 -105.4648804	Lat/Long Source:	IH
PBH L/L:	+43.8396572 -105.4613910	Lat/Long Source:	IH
PBHL Footage NS EW Origin:	100 FSL 1220 FWL CONGRESS SECTION	Datum:	NAD27
PBHL Section:	25 45N 72W	Datum:	NAD27
ABHL Footage NS EW Origin:	100 FSL 1220 FWL	Data Source:	PI
ABHL Section:	25 45N 72W	Spot:	SW SW
		Data Source:	PI
		Spot:	SWSW

Location Narrative

Data Source	Type	Remark
PI	SCALED_FOOT	REGULATORY
PI	IRREG_SECT	Y
PI	LOCATION	SPOTTED WITH STATE PROPOSED LAT/LONG
PI	CONG_LOT	CONGRESS LOT

Dates and Depths

Data Source:	PI	Spud Date Code:	
Spud:		TD Date:	
TD:		PlugBack Depth:	
TVD:		Formation Name TD:	
Formation Code TD:		PRODFit Form Name TD:	
PRODFit Form Code TD:		KB. Elevation:	
Ref. Elevation:	4,769 FT GR	LTD:	
Ground Elevation:	4,769 FT GR	Final Drilling:	
Contractor:		Rig #:	
Completed:			
Rig Release Date:			
Tool:			

Drilling Journal



Scout Ticket

Wed Jul 02, 2025

49005792930000

Project 2 - Ark Land

Campbell County, WY

2 Niobrara Wells - Scout Tickets

General Information

02-144372-1XNH ARK LAND FED

Data Source: PI
API/UWI: 49005792930000
State/Prov: WYOMING
Field: WILDCAT
Current Status:
Reg. Well Status/Date:
Initial Class: NEW FIELD WILDCAT (WF)
Final Status: AT TOTAL DEPTH
Permit: on Mar 26, 2025 APPROVED
First Report Date: Feb 20, 2025
Projected TD: 24,926 FT
Basin: POWDER RIVER BASIN
Play Name: NIOBRARA FRACTURE PLAY

Country: UNITED STATES
IC:
County: CAMPBELL
Operator: DEVON ENERGY PRODUCTION CO LP
Current Operator: DEVON ENERGY PRODUCTION CO LP
Final Well Class: ()
Target Objective: OIL
Hole Direction: HORIZONTAL
Abandonment Date:
Projected Formation: NIOBRARA
Formation at TD:
PRODFit Form at TD:
Play Type: SHALE (SHALE)

Location

Section, Twp., Range: 2 43N 72W **Data Source:** PI
Spot Code: NE
Footage NS EW Origin: 567 FNL 2087 FEL CONGRESS SECTION
Principal Meridian: 6TH PRINCIPAL MRDN
Lat/Long: +43.7363100 -105.4702600 **Lat/Long Source:** IH **Datum:** NAD27
PBH L/L: +43.6941600 -105.4783000 **Lat/Long Source:** IH **Datum:** NAD27
PBHL Footage NS EW Origin: 100 FSL 1091 FWL CONGRESS SECTION **Data Source:** PI
PBHL Section: 14 43N 72W **Spot:** SW

Location Narrative

Data Source	Type	Remark
PI	SCALED_FOOT	REGULATORY
PI	IRREG_SECT	Y
PI	CONG_LOT	CONGRESS LOT
PI	LOCATION	SPOTTED WITH PLAT PROPOSED LAT/LONG

Dates and Depths

Data Source: PI
Spud: May 01, 2025 **Spud Date Code:** A
TD: **TD Date:** May 20, 2025
TVD: **PlugBack Depth:**
Formation Code TD: **Formation Name TD:**
PRODFit Form Code TD: **PRODFit Form Name TD:**
Ref. Elevation: 4,977 FT GR **KB. Elevation:**
Ground Elevation: 4,977 FT GR **LTD:**
Contractor: CYCLONE DRILLING
Completed: **Final Drilling:** May 20, 2025
Rig Release Date: May 21, 2025 **Rig #:** 42
Tool: ROTARY

Drilling Journal Narrative



Scout Ticket

Narrative	Data Source	Date	Remark
1	PI	Apr 14, 2025	STATE PAPERWORK DRY HOLE SPUD 04-10-2025 TK DRILLING CORP, WORT TITE HOLEI
2	PI	May 05, 2025	DRLG, TITE HOLE
3	PI	May 12, 2025	DRLG, TITE HOLE
5	PI	May 22, 2025	DRLD, TITE HOLE

Drilling Remark

Drilling Remark	Data Source	Date	Remark
1	PI	Apr 10, 2025	INITIAL HOLE SPUD 04-10-2025 TK DRILLING CORP

Dwights Energydata Narrative

Accumulated through 1997

Grizzly Ridge Joint Venture

Multi-Project Horizontal Well Development Program
Powder River Basin, North Park Basin, Uinta Basin



EAGLE
NATURAL RESOURCES

S&P

Scout Ticket

Wed Jul 02, 2025

49005792920000

General Information

02-144372-3XNH ARK LAND FED

Data Source:	PI	Country:	UNITED STATES
API/UWI:	49005792920000	IC:	
State/Prov:	WYOMING	County:	CAMPBELL
Field:	WILDCAT	Operator:	DEVON ENERGY PRODUCTION CO LP
Current Status:		Current Operator:	DEVON ENERGY PRODUCTION CO LP
Reg. Well Status/Date:		Final Well Class:	()
Initial Class:	NEW FIELD WILDCAT (WF)	Target Objective:	OIL
Final Status:	AT TOTAL DEPTH	Hole Direction:	HORIZONTAL
Permit:	on Mar 25, 2025 APPROVED	Abandonment Date:	
First Report Date:	Feb 20, 2025	Projected Formation:	NIOBRARA
Projected TD:	22,404 FT	Formation at TD:	
Basin:	POWDER RIVER BASIN	PRODFit Form at TD:	
Play Name:	NIOBRARA FRACTURE PLAY	Play Type:	SHALE (SHALE)

Location

Section, Twp., Range:	2 43N 72W	Data Source:	PI
Spot Code:	NW NE		
Footage NS EW Origin:	586 FNL 2021 FEL CONGRESS SECTION		
Principal Meridian:	6TH PRINCIPAL MRDN		
Lat/Long:	+43.7362600 -105.4700100	Lat/Long Source:	IH
PBH L/L:	+43.6941600 -105.4707300	Lat/Long Source:	IH
PBHL Footage NS EW Origin:	100 FSL 2230 FEL CONGRESS SECTION	Datum:	NAD27
PBHL Section:	14 43N 72W	Datum:	NAD27
		Data Source:	PI
		Spot:	SE

Location Narrative

Data Source	Type	Remark
PI	SCALED_FOOT	REGULATORY
PI	IRREG_SECT	N
PI	LOCATION	SPOTTED WITH PLAT PROPOSED LAT/LONG

Dates and Depths

Data Source:	PI	Spud Date Code:	A
Spud:	Apr 24, 2025	TD Date:	Jun 08, 2025
TD:		PlugBack Depth:	
TVD:		Formation Name TD:	
Formation Code TD:		PRODFit Form Name TD:	
PRODFit Form Code TD:		KB. Elevation:	
Ref. Elevation:	4,978 FT GR	LTD:	
Ground Elevation:	4,978 FT GR		
Contractor:	CYCLONE DRILLING	Final Drilling:	Jun 08, 2025
Completed:		Rig #:	42
Rig Release Date:	Jun 09, 2025		
Tool:	ROTARY		

Drilling Journal Narrative



Scout Ticket

Narrative	Data Source	Date	Remark
1	PI	Apr 14, 2025	STATE PAPERWORK DRY HOLE SPUD 04-10-2025 TK DRILLING CORP, WORT TITE HOLEI
2	PI	Apr 28, 2025	DRLG, TITE HOLE
3	PI	May 01, 2025	SKID RIG TO ARK LAND FED #02-144372-1XNH; PAUSED, TITE HOLE
4	PI	May 26, 2025	RESUMED OPERATIONS APPROX. 5/26/2025; DRLG, TITE HOLE
5	PI	Jun 09, 2025	DRLD, TITE HOLE

Drilling Remark

Drilling Remark	Data Source	Date	Remark
1	PI	Apr 10, 2025	INITIAL HOLE SPUD 04-10-2025 TK DRILLING CORP

Dwights Energydata Narrative

Accumulated through 1997



Scout Ticket

Wed Jul 02, 2025

05057066370000

Project 3 - Janet Ray

Jackson County, CO

General Information

6-4H9 GREGORY 0780

8 Niobrara Wells - Scout Tickets

Data Source: PI
API/UWI: 05057066370000
State/Prov: COLORADO
Field: NORTH PARK HORIZO
Current Status:
Reg. Well Status/Date:
Initial Class: DEVELOPMENT WELL (D)
Final Status: WELL PERMIT
Permit: on Aug 19, 2024 APPROVED
First Report Date: Aug 20, 2024
Projected TD: 20,244 FT
Basin: NORTH PARK BASIN
Play Name: NIOBRARA FRACTURE PLAY

Country: UNITED STATES
IC:
County: JACKSON
Operator: FULCRUM ENERGY OPERATING LLC
Current Operator: FULCRUM ENERGY OPERATING LLC
Final Well Class: ()
Target Objective: OIL
Hole Direction: HORIZONTAL
Abandonment Date:
Projected Formation: NIOBRARA
Formation at TD:
PRODFit Form at TD:
Play Type: SHALE (SHALE)

Location

Section, Twp., Range:	5 7N 80W	Data Source:	PI
Spot Code:	NE		
Footage NS EW Origin:	432 FNL 817 FEL CONGRESS SECTION		
Principal Meridian:	6TH PRINCIPAL MRDN		
Lat/Long:	+40.6139936 -106.3896458	Lat/Long Source:	IH
PBH L/L:	+40.5851082 -106.3820473	Lat/Long Source:	IH
PBHL Footage NS EW Origin:	100 FSL 1484 FWL CONGRESS SECTION	Datum:	NAD27
PBHL Section:	9 7N 80W	Datum:	NAD27
PBHL Coordinates:	From Surface: 20,244 FT	Data Source:	PI
Polar:	Offset:	Spot:	SW
Coordinate:	Y Offset: 10,527 FT S	Data Source:	PI
		TVD:	8,525 FT
		Azimuth:	
		X Offset:	2,111 FT E

Location Narrative

Data Source	Type	Remark
PI	SCALED_FOOT	REGULATORY
PI	IRREG_SECT	Y
PI	LOCATION	SPOTTED WITH PLAT PROPOSED LAT/LONG

Dates and Depths

Data Source:	PI	Spud Date Code:	
Spud:		TD Date:	
TD:		PlugBack Depth:	
TVD:		Formation Name TD:	
Formation Code TD:		PRODFit Form Name TD:	
PRODFit Form Code TD:		KB. Elevation:	
Ref. Elevation:	8,097 FT GR	LTD:	
Ground Elevation:	8,097 FT GR	Final Drilling:	
Contractor:		Rig #:	
Completed:			
Rig Release Date:			
Tool:			

Drilling Journal

Grizzly Ridge Joint Venture

Multi-Project Horizontal Well Development Program
Powder River Basin, North Park Basin, Uinta Basin



EAGLE
NATURAL RESOURCES

S&P

Scout Ticket

Wed Jul 02, 2025

05057066390000

General Information

4-4H9 GREGORY 0780

Data Source:	PI	Country:	UNITED STATES
API/UWI:	05057066390000	IC:	
State/Prov:	COLORADO	County:	JACKSON
Field:	NORTH PARK HORIZO	Operator:	FULCRUM ENERGY OPERATING LLC
Current Status:		Current Operator:	FULCRUM ENERGY OPERATING LLC
Reg. Well Status/Date:		Final Well Class:	()
Initial Class:	DEVELOPMENT WELL (D)	Target Objective:	OIL
Final Status:	WELL PERMIT	Hole Direction:	HORIZONTAL
Permit:	on Aug 19, 2024 APPROVED	Abandonment Date:	
First Report Date:	Aug 20, 2024	Projected Formation:	NIOBRARA
Projected TD:	20,529 FT	Formation at TD:	
Basin:	NORTH PARK BASIN	PRODFit Form at TD:	
Play Name:	NIOBRARA FRACTURE PLAY	Play Type:	SHALE (SHALE)

Location

Section, Twp., Range:	5 7N 80W	Data Source:	PI
Spot Code:	NE		
Footage NS EW Origin:	432 FNL 777 FEL CONGRESS SECTION		
Principal Meridian:	6TH PRINCIPAL MRDN		
Lat/Long:	+40.6139956 -106.3895018	Lat/Long Source:	IH
PBH L/L:	+40.5851572 -106.3796714	Lat/Long Source:	IH
PBHL Footage NS EW Origin:	100 FSL 2144 FWL CONGRESS SECTION	Datum:	NAD27
PBHL Section:	9 7N 80W	Datum:	NAD27
PBHL Coordinates:	From Surface: 20,529 FT	Data Source:	PI
Polar:	Offset:	Spot:	SW
Coordinate:	Y Offset: 10,510 FT S	Data Source:	PI
		TVD:	8,565 FT
		Azimuth:	
		X Offset:	2,731 FT E

Location Narrative

Data Source	Type	Remark
PI	SCALED_FOOT	REGULATORY
PI	IRREG_SECT	Y
PI	LOCATION	SPOTTED WITH PLAT PROPOSED LAT/LONG

Dates and Depths

Data Source:	PI	Spud Date Code:	
Spud:		TD Date:	
TD:		PlugBack Depth:	
TVD:		Formation Name TD:	
Formation Code TD:		PRODFit Form Name TD:	
PRODFit Form Code TD:		KB. Elevation:	
Ref. Elevation:	8,098 FT GR	LTD:	
Ground Elevation:	8,098 FT GR	Final Drilling:	
Contractor:		Rig #:	
Completed:			
Rig Release Date:			
Tool:			

Drilling Journal



Scout Ticket

Wed Jul 02, 2025

05057066460000

General Information

1-33H21 PRU-JANET 0880

Data Source:	PI	Country:	UNITED STATES
API/UWI:	05057066460000	IC:	
State/Prov:	COLORADO	County:	JACKSON
Field:	NORTH PARK HORIZO	Operator:	FULCRUM ENERGY OPERATING LLC
Current Status:		Current Operator:	FULCRUM ENERGY OPERATING LLC
Reg. Well Status/Date:		Final Well Class:	()
Initial Class:	DEVELOPMENT WELL (D)	Target Objective:	OIL
Final Status:	WELL PERMIT	Hole Direction:	HORIZONTAL
Permit:	on Aug 19, 2024 APPROVED	Abandonment Date:	
First Report Date:	Aug 20, 2024	Projected Formation:	NIOBRARA
Projected TD:	21,916 FT	Formation at TD:	
Basin:	NORTH PARK BASIN	PRODFit Form at TD:	
Play Name:	NIOBRARA FRACTURE PLAY	Play Type:	SHALE (SHALE)

Location

Section, Twp., Range:	5 7N 80W	Data Source:	PI
Spot Code:	NE		
Footage NS EW Origin:	268 FNL 884 FEL CONGRESS SECTION		
Principal Meridian:	6TH PRINCIPAL MRDN		
Lat/Long:	+40.6144456 -106.3898678	Lat/Long Source:	IH
PBH L/L:	+40.6509800 -106.3857246	Lat/Long Source:	IH
PBHL Footage NS EW Origin:	2531 FSL 445 FWL CONGRESS SECTION	Datum:	NAD27
PBHL Section:	21 8N 80W	Datum:	NAD27
PBHL Coordinates:	From Surface: 21,916 FT	Data Source:	PI
Polar:	Offset:	Spot:	SW
Coordinate:	Y Offset: 13,310 FT N	Data Source:	PI
		TVD:	8,438 FT
		Azimuth:	
		X Offset:	1,149 FT E

Location Narrative

Data Source	Type	Remark
PI	SCALED_FOOT	REGULATORY
PI	IRREG_SECT	Y
PI	LOCATION	SPOTTED WITH PLAT PROPOSED LAT/LONG

Dates and Depths

Data Source:	PI	Spud Date Code:	
Spud:		TD Date:	
TD:		PlugBack Depth:	
TVD:		Formation Name TD:	
Formation Code TD:		PRODFit Form Name TD:	
PRODFit Form Code TD:		KB. Elevation:	
Ref. Elevation:	8,098 FT GR	LTD:	
Ground Elevation:	8,098 FT GR	Final Drilling:	
Contractor:		Rig #:	
Completed:			
Rig Release Date:			
Tool:			

Drilling Journal



Scout Ticket

Wed Jul 02, 2025

05057066430000

General Information

7-4H9 GREGORY 0780

Data Source:	PI	Country:	UNITED STATES
API/UWI:	05057066430000	IC:	
State/Prov:	COLORADO	County:	JACKSON
Field:	NORTH PARK HORIZO	Operator:	FULCRUM ENERGY OPERATING LLC
Current Status:		Current Operator:	FULCRUM ENERGY OPERATING LLC
Reg. Well Status/Date:		Final Well Class:	()
Initial Class:	DEVELOPMENT WELL (D)	Target Objective:	OIL
Final Status:	WELL PERMIT	Hole Direction:	HORIZONTAL
Permit:	on Aug 19, 2024 APPROVED	Abandonment Date:	
First Report Date:	Aug 20, 2024	Projected Formation:	NIOBRARA
Projected TD:	19,859 FT	Formation at TD:	
Basin:	NORTH PARK BASIN	PRODFit Form at TD:	
Play Name:	NIOBRARA FRACTURE PLAY	Play Type:	SHALE (SHALE)

Location

Section, Twp., Range:	5 7N 80W	Data Source:	PI
Spot Code:	NE		
Footage NS EW Origin:	432 FNL 837 FEL CONGRESS SECTION		
Principal Meridian:	6TH PRINCIPAL MRDN		
Lat/Long:	+40.6139936 -106.3897178	Lat/Long Source:	IH
PBH L/L:	+40.5850832 -106.3832353	Lat/Long Source:	IH
PBHL Footage NS EW Origin:	100 FSL 1155 FWL CONGRESS SECTION	Datum:	NAD27
PBHL Section:	9 7N 80W	Datum:	NAD27
PBHL Coordinates:	From Surface: 19,859 FT	Data Source:	PI
Polar:	Offset:	Spot:	SW
Coordinate:	Y Offset: 10,536 FT S	Data Source:	PI
		TVD:	8,220 FT
		Azimuth:	
		X Offset:	1,801 FT E

Location Narrative

Data Source	Type	Remark
PI	SCALED_FOOT	REGULATORY
PI	IRREG_SECT	Y
PI	LOCATION	SPOTTED WITH PLAT PROPOSED LAT/LONG

Dates and Depths

Data Source:	PI	Spud Date Code:	
Spud:		TD Date:	
TD:		PlugBack Depth:	
TVD:		Formation Name TD:	
Formation Code TD:		PRODFit Form Name TD:	
PRODFit Form Code TD:		KB. Elevation:	
Ref. Elevation:	8,098 FT GR	LTD:	
Ground Elevation:	8,098 FT GR	Final Drilling:	
Contractor:		Rig #:	
Completed:			
Rig Release Date:			
Tool:			

Drilling Journal



Scout Ticket

Wed Jul 02, 2025

05057066450000

General Information

2-33H21 PRU-JANET 0880

Data Source:	PI	Country:	UNITED STATES
API/UWI:	05057066450000	IC:	
State/Prov:	COLORADO	County:	JACKSON
Field:	NORTH PARK HORIZO	Operator:	FULCRUM ENERGY OPERATING LLC
Current Status:		Current Operator:	FULCRUM ENERGY OPERATING LLC
Reg. Well Status/Date:		Final Well Class:	()
Initial Class:	DEVELOPMENT WELL (D)	Target Objective:	OIL
Final Status:	WELL PERMIT	Hole Direction:	HORIZONTAL
Permit:	on Aug 19, 2024 APPROVED	Abandonment Date:	
First Report Date:	Aug 20, 2024	Projected Formation:	NIOBRARA
Projected TD:	21,715 FT	Formation at TD:	
Basin:	NORTH PARK BASIN	PRODFit Form at TD:	
Play Name:	NIOBRARA FRACTURE PLAY	Play Type:	SHALE (SHALE)

Location

Section, Twp., Range:	5 7N 80W	Data Source:	PI
Spot Code:	NE		
Footage NS EW Origin:	268 FNL 864 FEL CONGRESS SECTION		
Principal Meridian:	6TH PRINCIPAL MRDN		
Lat/Long:	+40.6144456 -106.3897958	Lat/Long Source:	IH
PBH L/L:	+40.6509820 -106.3843196	Lat/Long Source:	IH
PBHL Footage NS EW Origin:	2534 FSL 835 FWL CONGRESS SECTION	Datum:	NAD27
PBHL Section:	21 8N 80W	Datum:	NAD27
PBHL Coordinates:	From Surface: 21,715 FT	Data Source:	PI
Polar:	Offset:	Spot:	SW
Coordinate:	Y Offset: 13,311 FT N	TVD:	8,179 FT
		Azimuth:	
		X Offset:	1,519 FT E

Location Narrative

Data Source	Type	Remark
PI	SCALED_FOOT	REGULATORY
PI	IRREG_SECT	Y
PI	LOCATION	SPOTTED WITH PLAT PROPOSED LAT/LONG

Dates and Depths

Data Source:	PI	Spud Date Code:	
Spud:		TD Date:	
TD:		PlugBack Depth:	
TVD:		Formation Name TD:	
Formation Code TD:		PRODFit Form Name TD:	
PRODFit Form Code TD:		KB. Elevation:	
Ref. Elevation:	8,098 FT GR	LTD:	
Ground Elevation:	8,098 FT GR	Final Drilling:	
Contractor:		Rig #:	
Completed:			
Rig Release Date:			
Tool:			

Drilling Journal

Grizzly Ridge Joint Venture

Multi-Project Horizontal Well Development Program
Powder River Basin, North Park Basin, Uinta Basin



EAGLE
NATURAL RESOURCES

S&P

Wed Jul 02, 2025

Scout Ticket

05057066420000

General Information

5-4H9 GREGORY 0780

Data Source:	PI	Country:	UNITED STATES
API/UWI:	05057066420000	IC:	
State/Prov:	COLORADO	County:	JACKSON
Field:	NORTH PARK HORIZO	Operator:	FULCRUM ENERGY OPERATING LLC
Current Status:		Current Operator:	FULCRUM ENERGY OPERATING LLC
Reg. Well Status/Date:		Final Well Class:	()
Initial Class:	DEVELOPMENT WELL (D)	Target Objective:	OIL
Final Status:	WELL PERMIT	Hole Direction:	HORIZONTAL
Permit:	on Aug 19, 2024 APPROVED	Abandonment Date:	
First Report Date:	Aug 20, 2024	Projected Formation:	NIOBRARA
Projected TD:	20,129 FT	Formation at TD:	
Basin:	NORTH PARK BASIN	PRODFit Form at TD:	
Play Name:	NIOBRARA FRACTURE PLAY	Play Type:	SHALE (SHALE)

Location

Section, Twp., Range:	5 7N 80W	Data Source:	PI
Spot Code:	NE		
Footage NS EW Origin:	432 FNL 797 FEL CONGRESS SECTION		
Principal Meridian:	6TH PRINCIPAL MRDN		
Lat/Long:	+40.6139946 -106.3895738	Lat/Long Source:	IH
PBH L/L:	+40.5851322 -106.3808593	Lat/Long Source:	IH
PBHL Footage NS EW Origin:	100 FSL 1814 FWL CONGRESS SECTION	Datum:	NAD27
PBHL Section:	9 7N 80W	Datum:	NAD27
PBHL Coordinates:	From Surface: 20,129 FT	Data Source:	PI
Polar:	Offset:	Spot:	SW
Coordinate:	Y Offset: 10,519 FT S	TVD:	8,260 FT
		Azimuth:	
		X Offset:	2,421 FT E

Location Narrative

Data Source	Type	Remark
PI	SCALED_FOOT	REGULATORY
PI	IRREG_SECT	Y
PI	LOCATION	SPOTTED WITH PLAT PROPOSED LAT/LONG

Dates and Depths

Data Source:	PI	Spud Date Code:	
Spud:		TD Date:	
TD:		PlugBack Depth:	
TVD:		Formation Name TD:	
Formation Code TD:		PRODFit Form Name TD:	
PRODFit Form Code TD:		KB. Elevation:	
Ref. Elevation:	8,098 FT GR	LTD:	
Ground Elevation:	8,098 FT GR	Final Drilling:	
Contractor:		Rig #:	
Completed:			
Rig Release Date:			
Tool:			

Drilling Journal



Scout Ticket

Wed Jul 02, 2025

05057065550000

General Information

3-16H RAY RANCH 0780

Data Source:	PI	Country:	UNITED STATES
API/UWI:	05057065550000	IC:	
State/Prov:	COLORADO	County:	JACKSON
Field:	UNNAMED	Operator:	SANDRIDGE EXPLORATION & PRODUCTION LLC
Current Status:		Current Operator:	SANDRIDGE EXPLORATION & PRODUCTION LLC
Reg. Well Status/Date:		Final Well Class:	NEW FIELD WILDCAT-DRY (INCLUDING TEMPORARILY ABANDONED WELL) (WF)
Initial Class:	NEW FIELD WILDCAT (WF)	Target Objective:	OIL
Final Status:	SPUD AND ABANDONED	Hole Direction:	HORIZONTAL
Permit:	on Jun 28, 2016 APPROVED	Abandonment Date:	
First Report Date:	Jun 29, 2016	Projected Formation:	NIOBRARA
Projected TD:	13,922 FT	Formation at TD:	
Basin:	NORTH PARK BASIN	PRODFit Form at TD:	
Play Name:	NIOBRARA FRACTURE PLAY	Play Type:	SHALE (SHALE)

Location

Section, Twp., Range:	21 7N 80W	Data Source:	PI
Spot Code:	NE		
Footage NS EW Origin:	250 FNL 1927 FEL CONGRESS SECTION		
Principal Meridian:	6TH PRINCIPAL MRDN		
Lat/Long:	+40.5695557 -106.3753185	Lat/Long Source:	IH
PBH L/L:	+40.5842160 -106.3718527	Lat/Long Source:	IH
PBHL Footage NS EW Origin:	300 FNL 990 FEL CONGRESS SECTION	Datum:	NAD27
PBHL Section:	16 7N 80W	Datum:	NAD27
PBHL Coordinates:	From Surface: 13,922 FT	Data Source:	PI
Polar:	Offset:	Spot:	NE
Coordinate:	Y Offset:	TVD:	8,394 FT
		Azimuth:	
		X Offset:	

Location Narrative

Data Source	Type	Remark
PI	SCALED_FOOT	REGULATORY
PI	IRREG_SECT	Y
PI	LOCATION	IHS REVISED FTG: 207 FNL 1897 FEL OF SEC
PI	DST_TOWN	12.2 MI SW WALDEN, CO
PI	DST_FIELD	1.7 MI N NORTH PARK HORIZONTAL NIOBRARA FLD(NIOBRARA)
PI	LOCATION	SPOTTED WITH STATE AS-DRILLED LAT/LONG

Dates and Depths

Data Source:	PI	Spud Date Code:	A
Spud:	Aug 08, 2016	TD Date:	Aug 08, 2016
TD:	2,407 FT	PlugBack Depth:	
TVD:		Formation Name TD:	
Formation Code TD:		PRODFit Form Name TD:	
PRODFit Form Code TD:		KB. Elevation:	8,241 FT
Ref. Elevation:	8,241 FT KB	LTD:	
Ground Elevation:	8,235 FT GR		

Grizzly Ridge Joint Venture

Multi-Project Horizontal Well Development Program
Powder River Basin, North Park Basin, Uinta Basin



EAGLE
NATURAL RESOURCES

S&P

Scout Ticket

Wed Jul 02, 2025

Contractor: WHITE MOUNTAIN OPERATING LLC
 Completed: Aug 09, 2016 Final Drilling: Aug 08, 2016
 Rig Release Date: Rig #: 344
 Tool: INITIAL SPUD

Casing, Liner, Tubing

Casing	Data Source	Size	Base Depth	Cement	PRODFit Top Formation Code	PRODFit Base Formation Code
CASING	PI	9 5/8 IN	2,404 FT	663 SACK		
CASING	PI	20 IN	96 FT			

Drilling Journal

Lease Acres

Lease Acres: 1200 ACRE

Narrative

Narrative	Data Source	Date	Remark
1	PI	Aug 08, 2016	DRLG
2	PI	Aug 09, 2016	WORT
3	PI	Jan 07, 2017	WORT @ 2407
4	PI	Aug 24, 2018	DRLG

Drilling Remark

Drilling Remark	Data Source	Date	Remark
2	PI	Aug 08, 2016	INITIAL HOLE SPUD 08/07/2016 BY WHITE MOUNTAIN OPERATING #344

Dwights Energydata Narrative

Accumulated through 1997

Horizontal

Lateral Hole: Data Source: PI Contractor:
 Horizontal Length: Feet in Pay:
 Formation:
 PRODFit Formation at 80 Degree Heel Point:
 Total Horizontal Displacement: Method:
 Max Build-up rate: /
 Max angle of Deviation:
 Remark: HORIZONTAL DATA CALCULATED FROM DIRECTIONAL SURVEYS, IP TESTS AND/OR IH LAT/LONGS



Scout Ticket

05057065300000

General Information

4-16H RAY RANCH 0780

Data Source:	PI	Country:	UNITED STATES
API/UWI:	05057065300000	IC:	
State/Prov:	COLORADO	County:	JACKSON
Field:	WILDCAT	Operator:	SANDRIDGE EXPLORATION & PRODUCTION LLC
Current Status:		Current Operator:	SANDRIDGE EXPLORATION & PRODUCTION LLC
Reg. Well Status/Date:		Final Well Class:	NEW FIELD WILDCAT-DRY (INCLUDING TEMPORARILY ABANDONED WELL) (WF)
Initial Class:	NEW FIELD WILDCAT (WF)	Target Objective:	OIL
Final Status:	TEMPORARILY ABANDONED	Hole Direction:	HORIZONTAL
Permit:	on Jul 24, 2014 APPROVED	Abandonment Date:	
First Report Date:	Jul 25, 2014	Projected Formation:	NIOBRARA
Projected TD:	13,904 FT	Formation at TD:	SUSSEX
Basin:	NORTH PARK BASIN	PRODFit Form at TD:	
Play Name:	NIOBRARA FRACTURE PLAY	Play Type:	SHALE (SHALE)

Location

Section, Twp., Range:	21 7N 80W	Data Source:	PI
Spot Code:	NE		
Footage NS EW Origin:	250 FNL 1912 FEL CONGRESS SECTION		
Principal Meridian:	6TH PRINCIPAL MRDN		
Lat/Long:	+40.5695557 -106.3752635	Lat/Long Source:	IH
PBHL L/L:	+40.5841497 -106.3694302	Lat/Long Source:	IH
PBHL Footage NS EW Origin:	300 FNL 350 FEL CONGRESS SECTION	Datum:	NAD27
PBHL Section:	16 7N 80W	Datum:	NAD27
PBHL Coordinates:	From Surface: 13,904 FT	Data Source:	PI
Polar:	Offset:	Spot:	NE
Coordinate:	Y Offset:	TVD:	8,518 FT
		Azimuth:	
		X Offset:	

Location Narrative

Data Source	Type	Remark
PI	SCALED_FOOT	REGULATORY
PI	IRREG_SECT	Y
PI	DST_TOWN	12.2 MI SW WALDEN, CO
PI	DST_FIELD	1.7 MI N NORTH PARK HORIZONTAL NIOBRARA FLD(NIOBRARA)

Dates and Depths

Data Source:	PI	Spud Date Code:	E
Spud:	Aug 12, 2016	TD Date:	
TD:	2,407 FT	PlugBack Depth:	
TVD:		Formation Name TD:	SUSSEX
Formation Code TD:	604SSSX	PRODFit Form Name TD:	
PRODFit Form Code TD:		KB. Elevation:	8,241 FT
Ref. Elevation:	8,241 FT KB	LTD:	
Ground Elevation:	8,235 FT GR		
Contractor:	NOT REPORTED	Final Drilling:	
Completed:	Dec 10, 2018		

Scout Ticket

Rig Release Date: _____ **Rig #:** _____
Tool: ROTARY

Casing, Liner, Tubing

Casing	Data Source	Size	Base Depth	Cement	PRODFit Top Formation Code	PRODFit Base Formation Code
CASING	PI	20 IN	90 FT			
CASING	PI	9 5/8 IN	2,407 FT	663 SACK		

Drilling Journal

Lease Acres

Lease Acres: 1200 ACRE

Narrative

Narrative	Data Source	Date	Remark
2	PI	Aug 10, 2016	DRLG
3	PI	Aug 13, 2016	RDMO @ 2407, RETURN TO DRL AT A LATER DATE
4	PI	Jan 07, 2017	WORT @ 2407
5	PI	Oct 21, 2019	SHUT-IN

Drilling Remark

Drilling Remark	Data Source	Date	Remark
1	PI	Jun 28, 2016	SURF FTG CHGD FROM 204 FNL 1919 FEL; PBHL SPOT/FTG CHGD FROM SW/600 FSL 1980 FWL, PBHL SEC CHGD FROM 21, PROJ DEPTH CHGD FROM 12796 MD 7756 TVD, REPERMITTED 6/28/2016
2	PI	Aug 10, 2016	INITIAL HOLE SPUD 08/10/2016 BY WHITE MOUNTAIN OPERATING #344

Dwights Energydata Narrative

Accumulated through 1997

Horizontal

Lateral Hole: _____ **Data Source:** PI **Contractor:** _____
Horizontal Length: _____ **Feet in Pay:** _____
Formation: _____
PRODFit Formation at 80 Degree Heel Point: _____
Total Horizontal Displacement: _____ **Method:** _____
Max Build-up rate: /
Max angle of Deviation: _____

Remark: HORIZONTAL DATA CALCULATED FROM DIRECTIONAL SURVEYS, IP TESTS AND/OR IH LAT/LONGS

Old Information

Prior Well Number: 1 2-21H **Data Source:** PI
Prior Lease: 1 EVANS **Data Source:** PI
Spud Date: Aug 12, 2016 **Data Source:** PI
Old TD: _____ **Data Source:** PI
Prior Operator: 1 EE3 LLC **Data Source:** PI



Scout Ticket

Wed Jul 02, 2025

43013548320000

Project 4 - CD

Duchesne County, UT

1 Wasatch Well - Scout Ticket

General Information

4-21-22-C4-9H CD

Data Source:	PI	Country:	UNITED STATES
API/UWI:	43013548320000	IC:	
State/Prov:	UTAH	County:	DUCHESNE
Field:	ALTAMONT	Operator:	JAVELIN ENERGY PARTNERS MGMT LLC
Current Status:		Current Operator:	JAVELIN ENERGY PARTNERS MGMT LLC
Reg. Well Status/Date:		Final Well Class:	()
Initial Class:	DEVELOPMENT WELL (D)	Target Objective:	OIL
Final Status:	TREATED PENDING COMP	Hole Direction:	HORIZONTAL
Permit:	on Oct 03, 2024 APPROVED	Abandonment Date:	
First Report Date:	Nov 14, 2024	Projected Formation:	WASATCH
Projected TD:	20,549 FT	Formation at TD:	WASATCH
Basin:	UINTA BASIN	PRODFit Form at TD:	
Play Name:	UINTA OIL	Play Type:	CONVENTIONAL TIGHT (CONV TIGHT)

Location

Section, Twp., Range:	21 3S 4W	Data Source:	PI
Spot Code:	SW		
Footage NS EW Origin:	2608 FSL 269 FWL CONGRESS SECTION		
Principal Meridian:	UINTAH		
Lat/Long:	+40.2061020 -110.3492640	Lat/Long Source:	IH
PBH L/L:	+40.2107980 -110.3126080	Lat/Long Source:	IH
PBHL Footage NS EW Origin:	1153 FNL 135 FEL CONGRESS SECTION	Datum:	NAD27
PBHL Section:	22 3S 4W	Datum:	NAD27
PBHL Coordinates:	From Surface: 20,549 FT	Data Source:	PI
Polar:	Offset:	Spot:	NE
Coordinate:	Y Offset: 1,845 FT N	Data Source:	PI
		TVD:	9,589 FT
		Azimuth:	
		X Offset:	10,254 FT E

Location Narrative

Data Source	Type	Remark
PI	SCALED_FOOT	REGULATORY
PI	IRREG_SECT	Y
PI	LOCATION	SPOTTED WITH PLAT PROPOSED LAT/LONG

Dates and Depths

Data Source:	PI	Spud Date Code:	A
Spud:	Nov 12, 2024	TD Date:	Mar 29, 2025
TD:	20,549 FT	PlugBack Depth:	
TVD:		Formation Name TD:	WASATCH
Formation Code TD:	652WSTC	PRODFit Form Name TD:	
Ref. Elevation:	5,872 FT KB	KB. Elevation:	5,872 FT
Ground Elevation:	5,844 FT GR	LTD:	
Contractor:	PATTERSON-UTI DRILLING CO LLC	Final Drilling:	Mar 29, 2025
Completed:		Rig #:	275
Rig Release Date:			
Tool:	ROTARY		

Production Tests



Scout Ticket

PT: 001

Data Source: PI	Top Formation Code:
Top Formation Name:	PRODFit Top Formation Code:
PRODFit Top Formation Name:	Base Formation Code:
Base Formation Name:	PRODFit Base Formation Code:
PRODFit Base Formation Name:	Condensate:
Oil:	Water:
Gas:	Method:
Interval: -	Choke:
Duration of Test: Hours	GOR:
Oil Gravity:	Cond Ratio:
Cond Gravity:	Main Fluid Code:
Prod Method:	
Remarks on PT Test: Data Source: PI	

Treatments

Treatment: 001

Interval: -			
Fluid: 5,348 GAL	FRAC	Type:	HCL
Additive:			
Prop Agent:	Amount:		
Form. Break Down Pressure:			
Average Injection Rate:	Instant Shut-in Pressure:		
Stages: 1	Remarks:		

Treatment: 001

Interval: -			
Fluid: 459,022 BBL	FRAC	Type:	WATER
Additive:			
Prop Agent: SAND	Amount: 13,521 TON		
Form. Break Down Pressure:			
Average Injection Rate:	Instant Shut-in Pressure:		
Stages: 1	Remarks:		

Casing, Liner, Tubing

Narrative	Data Source	Type	Remark
	PI	CASING	CSG NOT RPTD

Drilling Journal

Lease Acres

Lease Acres: 1280 ACRE

Narrative

Narrative	Data Source	Date	Remark
1	PI	Nov 12, 2024	DRLG, TITE HOLE
2	PI	Nov 19, 2024	DRLG, TITE HOLE
3	PI	Nov 20, 2024	SKID RIG TO CD #9-20-19-C4-4H; PAUSED, TITE HOLE
4	PI	Dec 30, 2024	RESUMED OPERATIONS APPROX. 12/28/2024; DRLG, TITE HOLE
5	PI	Jan 05, 2025	SKID RIG TO LFR NORTH #8-27-28-B4-3H; PAUSED, TITE HOLE
6	PI	May 20, 2025	STATE PAPERWORK WOPT, TITE HOLE WOPT - "Waiting on Potential Test"

Drilling Remark